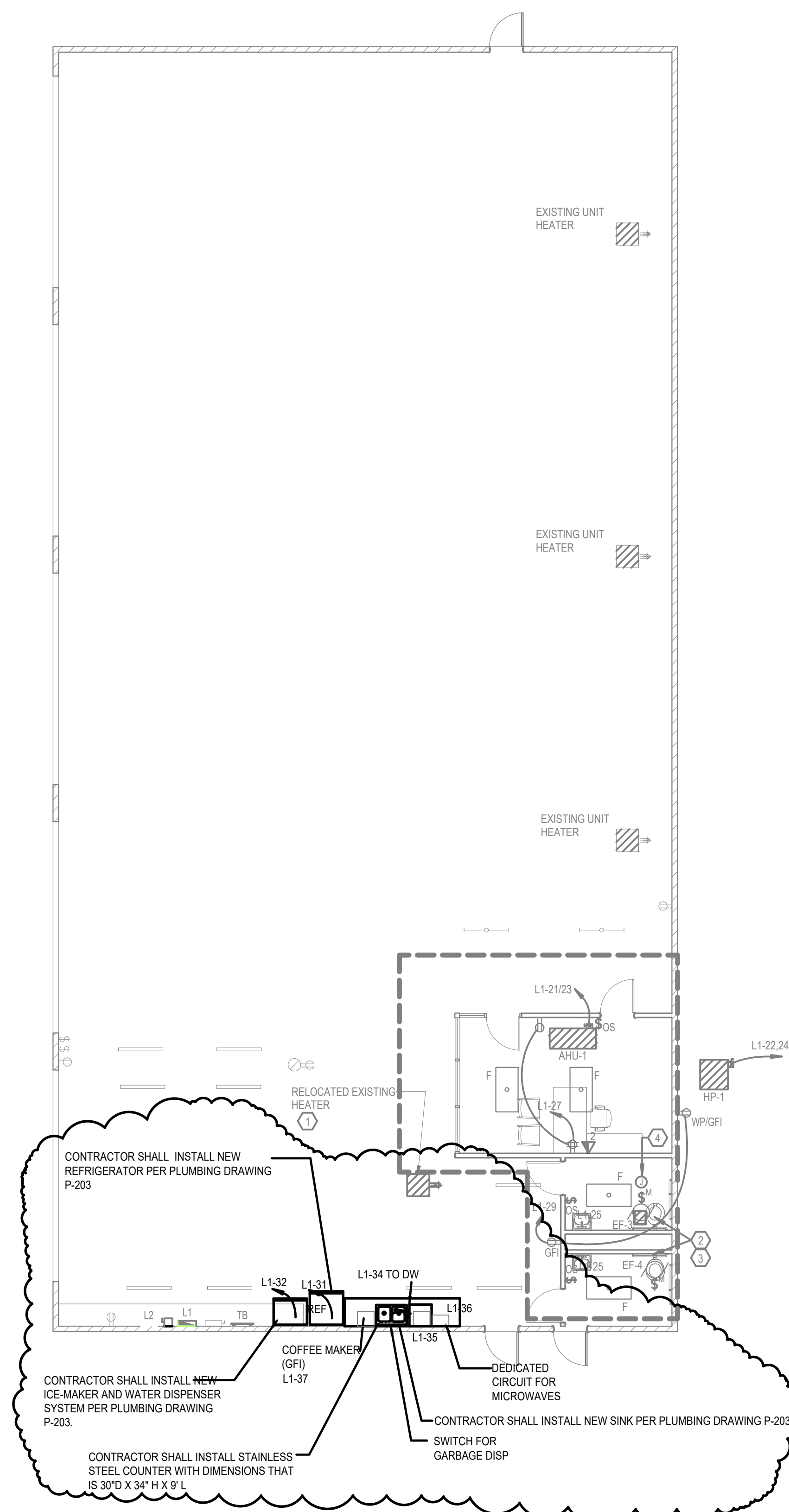


**GENERAL NOTES**

- A. REFER TO ARCHITECTURAL PLANS, ELEVATION AND DETAIL FOR EXACT LOCATION OF ALL WIRING DEVICES.
- B. CONTRACTOR TO PROVIDE 120V POWER TO HVAC TRANSFORMER CONTROLS ON THIS FLOOR. REFER TO MECHANICAL PLANS FOR EXACT LOCATION AND QUANTITY OF HVAC CONTROLS.
- C. REFER TO HVAC DRAWINGS AND COORDINATE WITH MECHANICAL CONTRACTOR FOR EXACT LOCATION OF ALL MECHANICAL EQUIPMENT BEFORE ROUGH-IN.
- D. ALL ELECTRICAL RACEWAY ROUTING SERVING THE CORRIDORS CONVENIENCE RECEPTACLES SHALL BE INSTALLED NEAR TO STEEL STRUCTURE.
- E. RECEPTACLES INSTALLED WITHIN 6" OF A SINK SHALL BE GFCI.
- F. THE CONTRACTOR SHALL VISIT THE PROJECT SITE TO VERIFY EXISTING CONDITIONS AND INCLUDE ALL RELATED WORK IN HIS BID.
- G. ALL FLOOR CUTTINGS SHALL BE COORDINATED WITH STRUCTURAL DRAWINGS FOR RESTRICTIONS. COORDINATE WITH STRUCTURAL ENGINEER AND GENERAL CONTRACTOR.
- H. LABEL ALL RECEPTACLES WITH PANEL DESIGNATION AND CIRCUIT NUMBERS.
- I. NOT ALLOW TO SHARE NEUTRAL IN MULTIWIRE BRANCH CIRCUITS FOR NORMAL OR ESSENTIAL BRANCH CIRCUITS. PROVIDE SEPARATE NEUTRAL FOR EACH BRANCH CIRCUIT.
- J. PROVIDE 1" EMPTY CONDUIT WITH PULL CORD FROM VOICE/DATA OUTLETS TO ABOVE ACCESSIBLE CEILING REQUIREMENTS.
- K. PROVIDE ARC FLASH WARNING LABELS ON ALL NEW PANELS.
- L. AREAS WITH HARD CEILING, EXTEND TELEPHONE/DATA, TV, AND FIRE ALARM CONDUITS TO NEAREST CORRIDOR.
- M. CONNECT NEW MOTORIZED SMOKE DAMPERS TO 120V POWER. REFER TO MECHANICAL PLANS FOR EXACT LOCATION AND QUANTITY OF FIRE SMOKE DAMPERS. REFER TO ELECTRICAL FOR BRANCH CIRCUITS ASSIGNMENT.

**KEY NOTES**

- 1. EXTEND ELECTRICAL CIRCUITRY AS REQUIRED.
- 2. ADD ALTERNATE #2, EF-3 & EF-4.
- 3. INTERLOCK WITH LIGHT SWITCH.
- 4. WH1- POWER FROM L1-26 (2#12, 1#12G-3#4C) ALTERNATE #2.



1 FLOOR PLAN - PMD1 - ELECTRICAL  
1/8" = 1'-0"

**LINE WEIGHT LEGEND**

LINE WEIGHT	DESCRIPTION
(Solid line)	EXISTING
(Dashed line)	NEW WORK