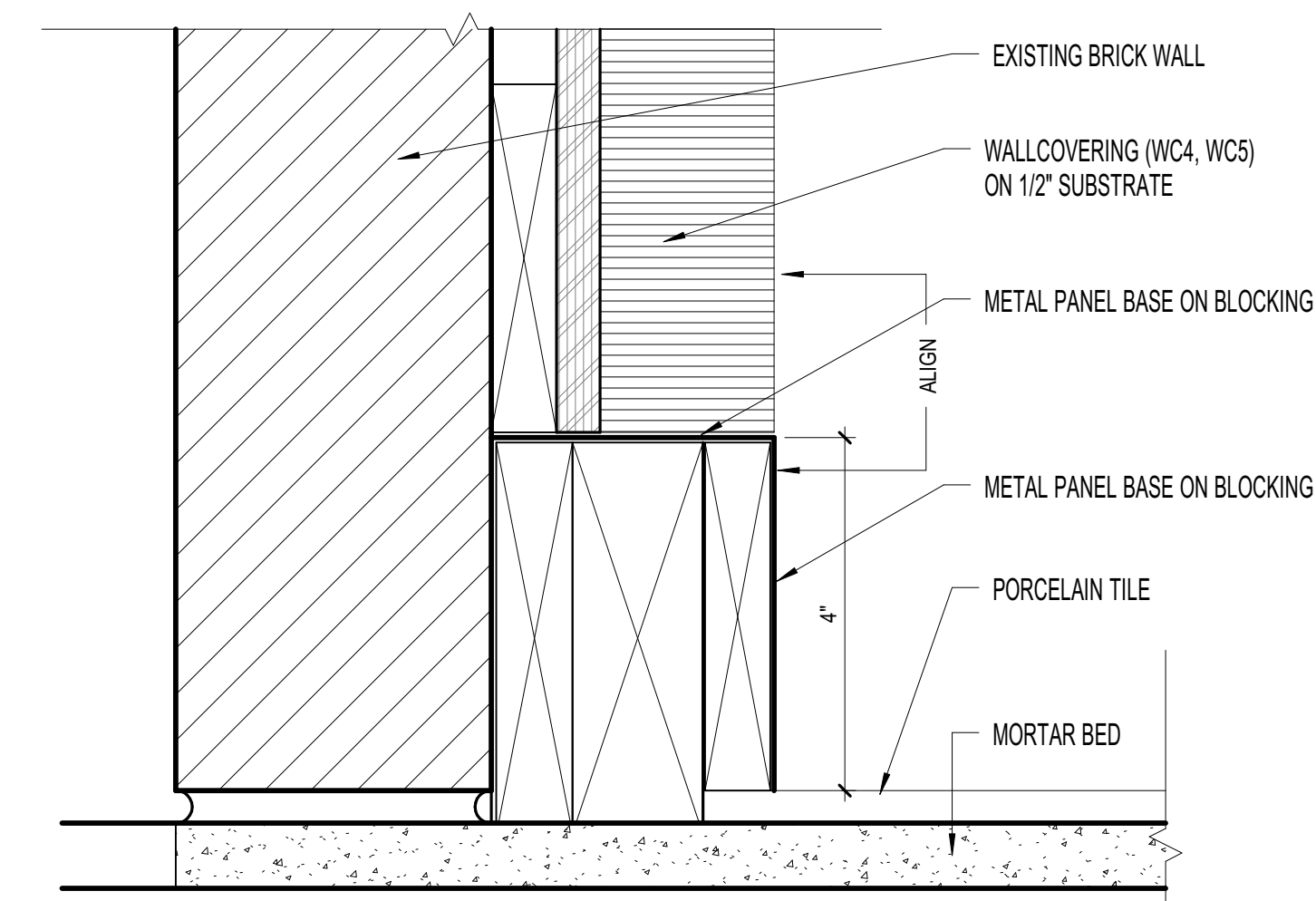




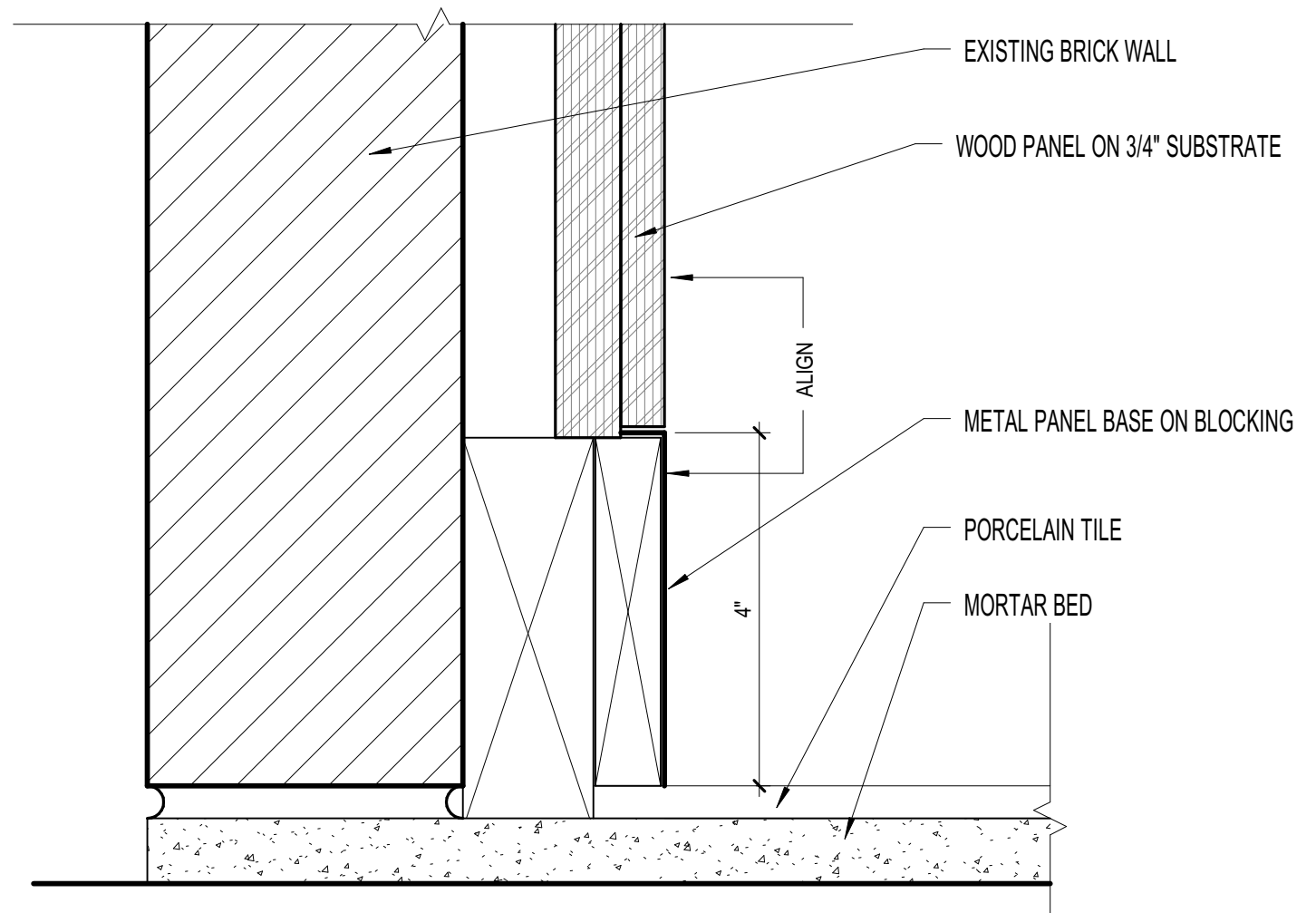
**FINISH LEGEND NOTES**

- FLOOR:**
- A. ALL FLOOR FINISH TRANSITION SHALL OCCUR AT CENTERLINE OF DOOR WHEN DOOR IS IN CLOSED POSITION.
  - B. REFER TO THIS SHEET FOR TRANSITION AND THRESHOLD DETAILS.
  - C. SCHLUTER FINISH TO BE BRUSHED ANODIZED ALUMINUM.
  - D. REFER TO A-221 SERIES FOR ALL FLOOR PATTERNS.
  - E. ALL FLOOR FINISH MATERIALS SHALL BE INSTALLED TIGHT TO DRYWALL AND CASEGOODS.
- WALL BASE:**
- A. ALL RUBBER BASE SHALL BE SEALED TIGHT TO FINISHED FLOOR MATERIAL.
  - B. PROVIDE SCHEDULED BASE ALONG BOTTOM OF EXPOSED FRONTS, BACKS, SIDES, AND ENDS OF ALL FIXED CABINETS, PEDESTALS, VERTICAL SUPPORT PANELS, KNEE SPACES, ETC., U.N.O. ON THE INTERIOR ELEVATIONS.
  - C. WHERE WALL CERAMIC TILE MEETS FLOOR, PROVIDE A WATER RESISTENT SILICONE CAULKING AT JOINT.
- WALL:**
- A. DO NOT APPLY WALL COVERING TO INSIDE FACE OF EXTERIOR WALLS. FOR ROOMS ON EXTERIOR PERIMETER OF BUILDING, WHERE ROOMS FINISH TAG INDICATES BOTH PAINT AND VINYL WALL COVERING, PAINT SHALL BE APPLIED TO INTERIOR FACE OF EXTERIOR WALLS, VINYL WALL COVERING APPLIED TO ALL REMAINING WALLS U.N.O.
  - B. INSTALL WALL COVERING FULL LENGTH OF WALL, FROM FINISHED CEILING TO FINISHED FLOOR, PRIOR TO WALL BASE INSTALLATION.
  - C. PAINT ALL ELECTRICAL AND ACCESS WALL PANELS TO MATCH ADJACENT WALL COLOR.
  - D. ALL FIRE EXTINGUISHER CABINETS ARE TO BE PAINTED THE SAME COLOR AS THE ADJACENT WALL U.N.O.
- CEILING:**
- A. HORIZONTAL AND VERTICAL SURFACE OF FLOOR-DOWN TO MATCH ADJACENT WALLS AND CEILING, UNLESS NOTED OTHERWISE.
  - B. REFER TO REFLECTED CEILING PLANS, SERIES A-60X, FOR ALL CEILING HEIGHTS.
  - C. PAINT ALL ACCESS PANELS IN CEILING TO MATCH ADJACENT CEILING COLOR.
- DOORS/WINDOWS:**
- A. DOOR FINISH TO BE PL2, MATCHING EXISTING CONDITIONS, UNLESS NOTED OTHERWISE.
  - B. INTERIOR HOLLOW METAL DOOR & FRAME, AND INTERIOR SURFACE OF EXTERIOR HOLLOW METAL DOOR & FRAME TO BE PAINTED COLOR P2, UNLESS NOTED OTHERWISE.
  - C. ALL INTERIOR VISION PANEL FRAMES TO BE PAINTED P2, UNLESS NOTED OTHERWISE.
  - D. REFER TO FINISH PLANS, SERIES A-221, FOR WINDOW TREATMENTS.
- MONUMENTAL STAIRS:**
- A. STAIR HANDRAIL, GUARDRAIL, STRINGERS, AND RISERS SHALL BE PAINTED TO MATCH MTL1.
  - B. STAIR TREADS TO RECEIVE P16.
- ACCESSORIES:**
- A. TOILET PARTITION COLOR TO BE SSM7.

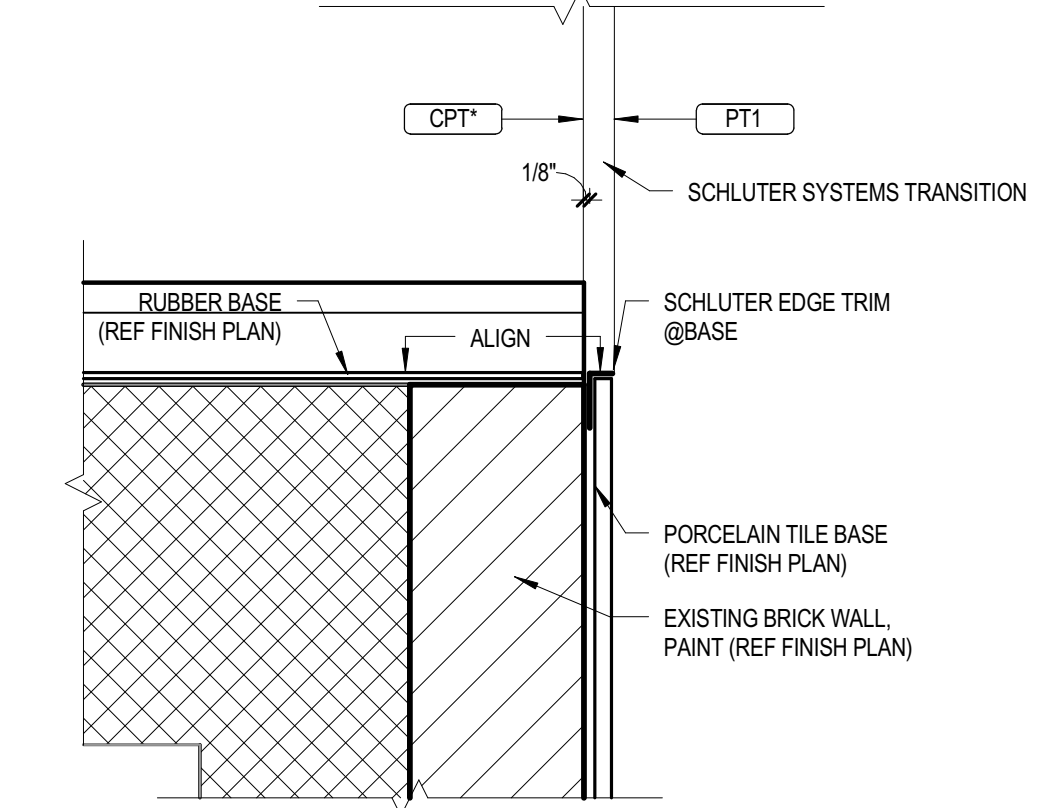
BASIS-OF-DESIGN FINISH LEGEND						
TAG	MANUFACTURER	STYLE	COLOR/FINISH	SIZE	COMMENTS	CONTACT
<b>ACOUSTICAL PANEL CEILING</b>						
APC1	ARMSTRONG	DUNE, ANGLED TEGULAR	WHITE	24X24	15/16" GRID, WHITE	ARMSTRONG - LEE BAGGETT LVBAGGETT@ARMSTRONG.COM
APC2	ARMSTRONG	DUNE, ANGLED TEGULAR	WHITE	24X48	15/16" GRID, WHITE	ARMSTRONG - LEE BAGGETT LVBAGGETT@ARMSTRONG.COM
<b>ACOUSTICAL WALL PANEL</b>						
AWP1	TECTUM	WALL PANEL	FIELD-PAINTED TO MATCH ADJACENT WALL	1" THICK X 48" WIDE X LENGTHS VARY (REFER TO ELEVATIONS)	MOUNTING STYLE: D-20	
<b>CARPET</b>						
CPT1	KINETEX	ACCELERATE	PROJECT NO. 1597	24X24	DIRECT APPLICATION ONTO EXISTING FLOOR (L-V) INVISION - JOSH BISHOP - JOSH.BISHOP@LJFLLOORINGGROUP.COM	
CPT2	KINETEX	ACCELERATE	INCREASE, NO. 1593	24X24	DIRECT APPLICATION ONTO EXISTING FLOOR (L-V) INVISION - JOSH BISHOP - JOSH.BISHOP@LJFLLOORINGGROUP.COM	
<b>FIBERGLASS REINFORCED PLASTIC</b>						
FRP1	CRANE COMPOSITES	GLASBORD EMBOSSED	WHITE (65)			
<b>GLASS TILE</b>						
GT1	REFLECTIONS IN GLASS TILE BY DAL TILE	STRAIGHT JOINT ASSEMBLY	COBALT BLUE	1" X 2"		DAL TILE - SHANNON HOPKINS - SHANNON.HOPKINS@DAL TILE.COM
<b>GLAZING SURFACE FILM</b>						
GSF1	3M FROSTED FILM (FASARA)	TBD	TBD	FULL HEIGHT X WIDTH OF EXTERIOR WINDOWS		
<b>METAL</b>						
MTL1	MATCH EXTERIOR METAL PANEL	MATCH EXTERIOR METAL PANEL	DARK BRONZE		REFERENCE ELEVATIONS FOR PANEL SIZES	
MTL2	MATCH EXTERIOR METAL PANEL	MATCH EXTERIOR METAL PANEL	DARK BRONZE	4" HEIGHT	REFERENCE ELEVATIONS FOR DETAILS	
<b>PAINT</b>						
P1	SHERWIN WILLIAMS		SW7004, SNOWBOUND			SHERWIN WILLIAMS - BRETT HUCKLEBURY - BHUCKLEBURY@SHERWIN.COM
P2	TNEMEC		DARK BRONZE 986R			THE BARRY GROUP/TNEMEC - CLAY WITT - CWITT@TNEMEC.COM
<b>PLASTIC LAMINATE</b>						
PL1	FORMICA	ASHEN RIBBONWOOD				FORMICA - CARRIE WHEELER - CARRIE.WHEELER@FORMICA.COM
PL2	WILSONART	BEIGEWOOD, 7950-60			REFERENCE CEILING DETAILS FOR LOCATION	WILSONART - TERESA HUMPHREY - HUMPHRT@WILSONART.COM
PL3	WILSONART	ISLAND D498-60			REFERENCE CEILING DETAILS FOR LOCATION	WILSONART - TERESA HUMPHREY - HUMPHRT@WILSONART.COM
PL4	FORMICA	LEAF GREEN, 8820-58			REFERENCE CEILING DETAILS FOR LOCATION	FORMICA - CARRIE WHEELER - CARRIE.WHEELER@FORMICA.COM
PL5	NEVAMAR	KOOL KIM, S5057T			REFERENCE CEILING DETAILS FOR LOCATION	NEVAMAR - DIANA HALL - DIANA.HALL@PANOLAM.COM
PL6	FORMICA	PALE GOLD, 7882-58			REFERENCE CEILING DETAILS FOR LOCATION	FORMICA - CARRIE WHEELER - CARRIE.WHEELER@FORMICA.COM
<b>PORCELAIN TILE</b>						
PT1	CONCEPT SURFACES	BOND	ANTHRACITE	12X24	INSTALL RUNNING BOND	CONCEPT SURFACES - GEOFF GROSS - GGROSS@CONCEPTSURFACES.COM
PT2	CROSSVILLE	SHADES BY CROSSVILLE	THUNDER, AV248	6X6	INSTALL RUNNING BOND	CROSSVILLE TILE - JOANN DUARTE - JDUARTE@CROSSVILLEINC.COM
PT3	CONCEPT SURFACES	HAYES SERIES	WHITE ICE BRIGHT, U081	4X10		CONCEPT SURFACES - GEOFF GROSS - GGROSS@CONCEPTSURFACES.COM
PT4	CROSSVILLE	SHADES BY CROSSVILLE	THUNDER, AV248	COVE BASE 6X12		CROSSVILLE TILE - JOANN DUARTE - JDUARTE@CROSSVILLEINC.COM
PT5	CONCEPT SURFACES	BOND	ANTHRACITE	4X24		CONCEPT SURFACES - GEOFF GROSS - GGROSS@CONCEPTSURFACES.COM
PT6	CONCEPT SURFACES	BOND	ANTHRACITE, MATTE	12X24 - STARTREAD		CONCEPT SURFACES - GEOFF GROSS - GGROSS@CONCEPTSURFACES.COM
<b>RESILIENT FLOOR TILE</b>						
RFT1	ARMSTRONG FLOORING	MIGRATIONS	POWDER GRAY	12X12		ARMSTRONG FLOORING - CHRISTY REED - CLREED@ARMSTRONG.COM
RFT2	ARMSTRONG FLOORING	MIGRATIONS	METAL GRAY	12X12		ARMSTRONG FLOORING - CHRISTY REED - CLREED@ARMSTRONG.COM
RFT3	ARMSTRONG FLOORING	MIGRATIONS	WASHED INDIGO	12X12		ARMSTRONG FLOORING - CHRISTY REED - CLREED@ARMSTRONG.COM
<b>RESILIENT SHEET FLOORING</b>						
RSF1	JOHNSONITE	RUBBER STAIR TREAD WITH INTEGRATED RISER FOR THE VISUALLY IMPAIRED	48 GREY	RAISED ROUND		
<b>RUBBER BASE</b>						
RB1	JOHNSONITE		44 DARK BROWN	4" X 120" ROLL		JOHNSONITE - MILLICENT MCLANE - MMCLANE@JOHNSONITE.COM
RB2	JOHNSONITE		48 GREY	4" X 120" ROLL		JOHNSONITE - MILLICENT MCLANE - MMCLANE@JOHNSONITE.COM
<b>SEALED CONCRETE</b>						
SC						
<b>SOLID SURFACE MATERIAL</b>						
SSM1	CORIAN	WHITE JASMINE				DUPONT ZODIAC - TIM J. WRIGHT - TIM.J.WRIGHT@USA.DUPONT.COM
SSM2	CORIAN	SORREL				DUPONT ZODIAC - TIM J. WRIGHT - TIM.J.WRIGHT@USA.DUPONT.COM
<b>WALL COVERING</b>						
WC1	WALLTALKERS	IMAGRITE	WHITE		INSTALL WITH ALUMINUM TRIM AND TRAY	KOROSEAL - JAMIE WESTEMEIER - JWESTEMEIER@KOROSEAL.COM
WC2	3M	CUSTOM GRAPHIC FILM				3M - ANGELA PALUSO - APALUSO@3M.COM
WC3	KNOLL TEXTILES	CUSTOM PRINTED GRAPHIC				KNOLL TEXTILES - SHANNON VASS - SVASS@KNOLLTEXTILES.COM
WC4	SYNLAWN	SYNTIPEDE PREMIUM 321			INSTALL WITH BLADES OF GRASS FACING UP	SYNLAWN - TINA PALOMBI - TPALOMBI@SYNLAWN.COM
WC5	SYNLAWN	SYNTIPEDE 214			INSTALL WITH BLADES OF GRASS FACING UP	SYNLAWN - TINA PALOMBI - TPALOMBI@SYNLAWN.COM
<b>WINDOW TREATMENT</b>						
WT1	LUTRON	MOTORIZED WINDOW SHADES	WHITE/WHITE S202-E	3% OPENNESS FACTOR		LUTRON ELECTRONICS - DARLENE EVANS - DEVANS@LUTRON.COM
WT2	LUTRON	MANUAL WINDOW SHADES	WHITE/WHITE S202-E	5% OPENNESS FACTOR		LUTRON ELECTRONICS - DARLENE EVANS - DEVANS@LUTRON.COM
<b>WOOD</b>						
WD2		TONGUE AND GROOVE CEDAR SOFFIT / CEILING			REFERENCE SPECIFICATIONS FOR DETAILS	
<b>WOOD BOARD PANELING</b>						
WD1	URBAN WOODS	SILVER DUST PINE	VERMONT NATURAL COATINGS IN MATTE SHEEN	10 1/2" WIDE X 5/8" THICK X RANDOM LENGTHS 3'-0" TO 8'-0"		URBAN WOODS - TRACEY BECHTOLD - TRACEY@URBANWOODSCOMPANY.COM



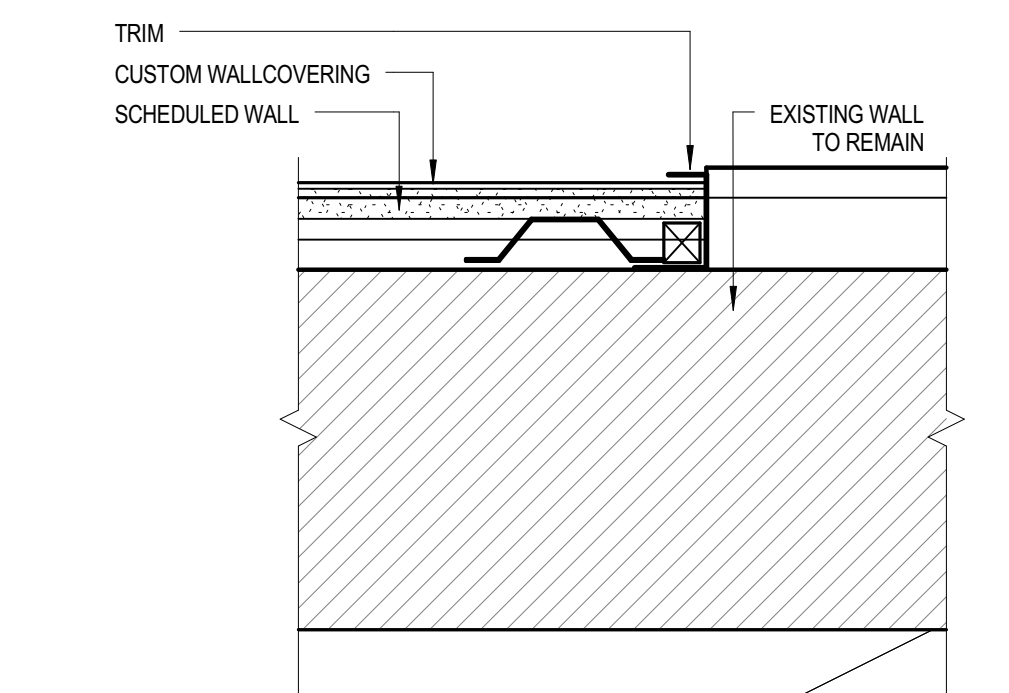
**08** DETAIL @ METAL BASE  
6" = 1'-0"



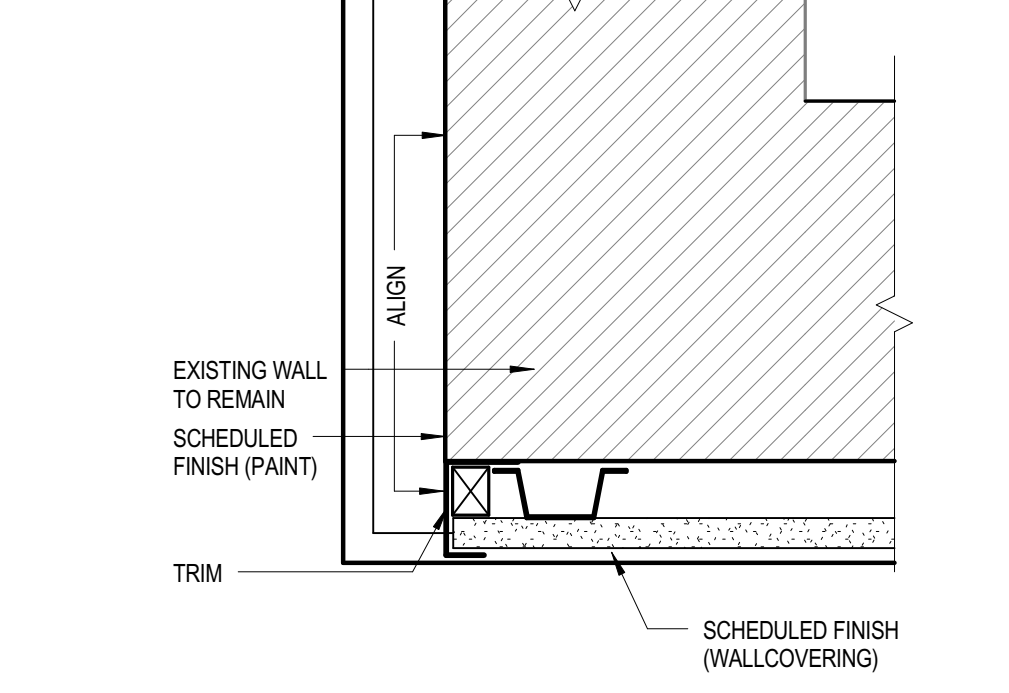
**07** DETAIL @ WD PANEL AT METAL BASE  
6" = 1'-0"



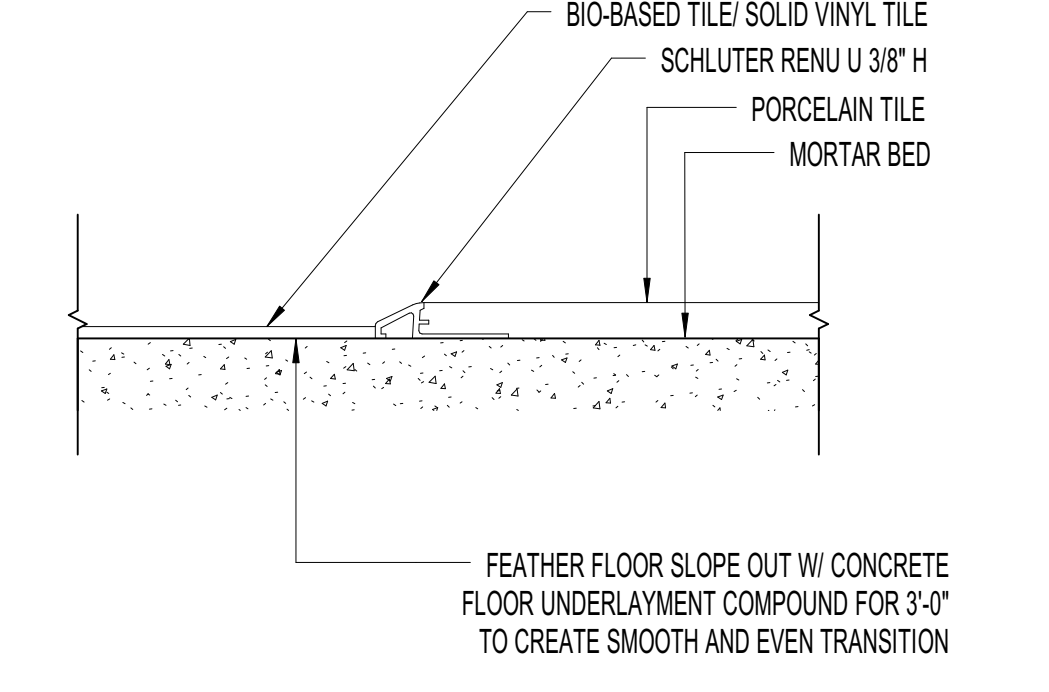
**6B** WALL BASE CORNER DTL  
3" = 1'-0"



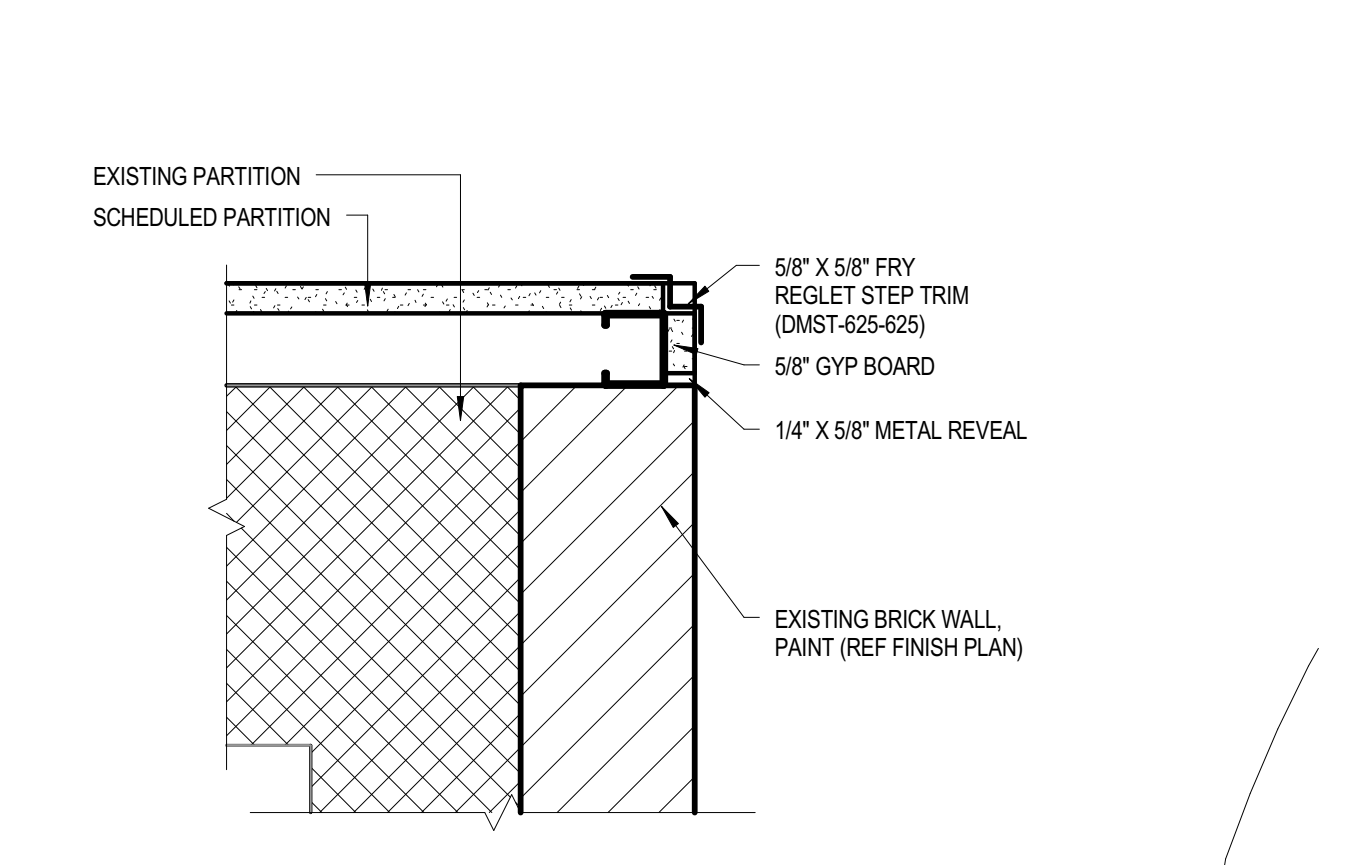
**4B** WALLCOVERING TRANSITION DTL  
3" = 1'-0"



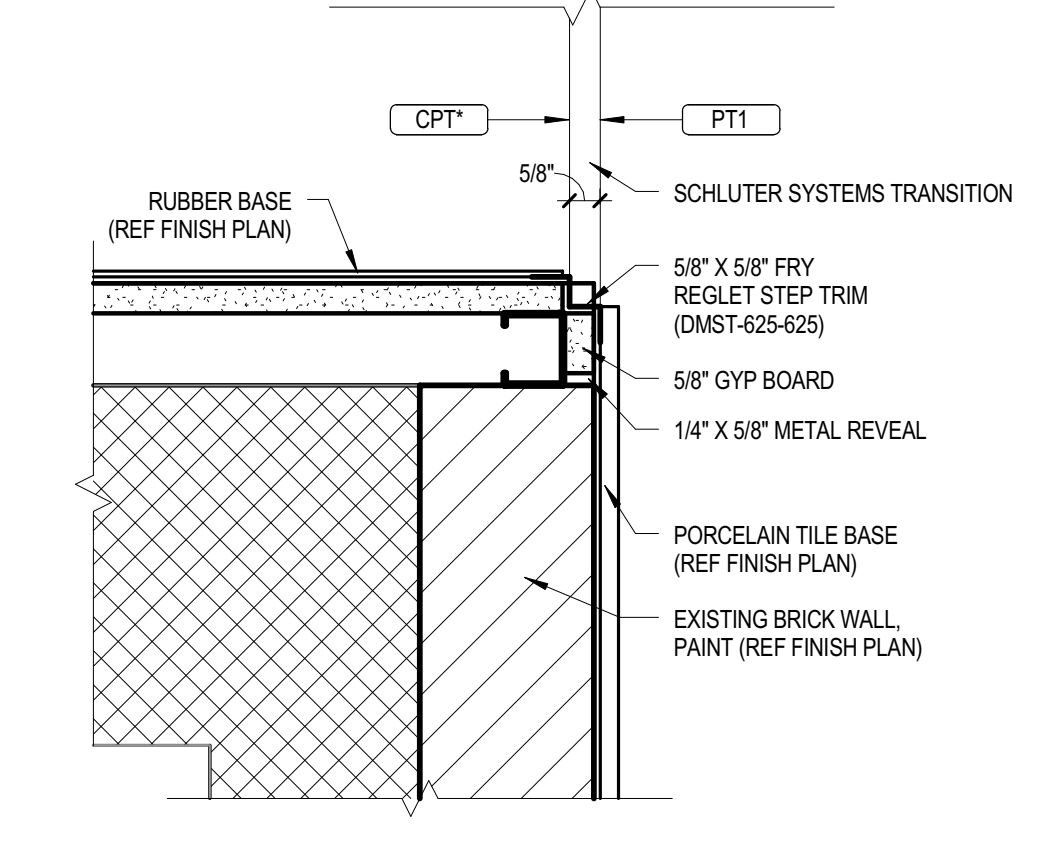
**3B** WALLCOVERING@ CORNER DTL  
3" = 1'-0"



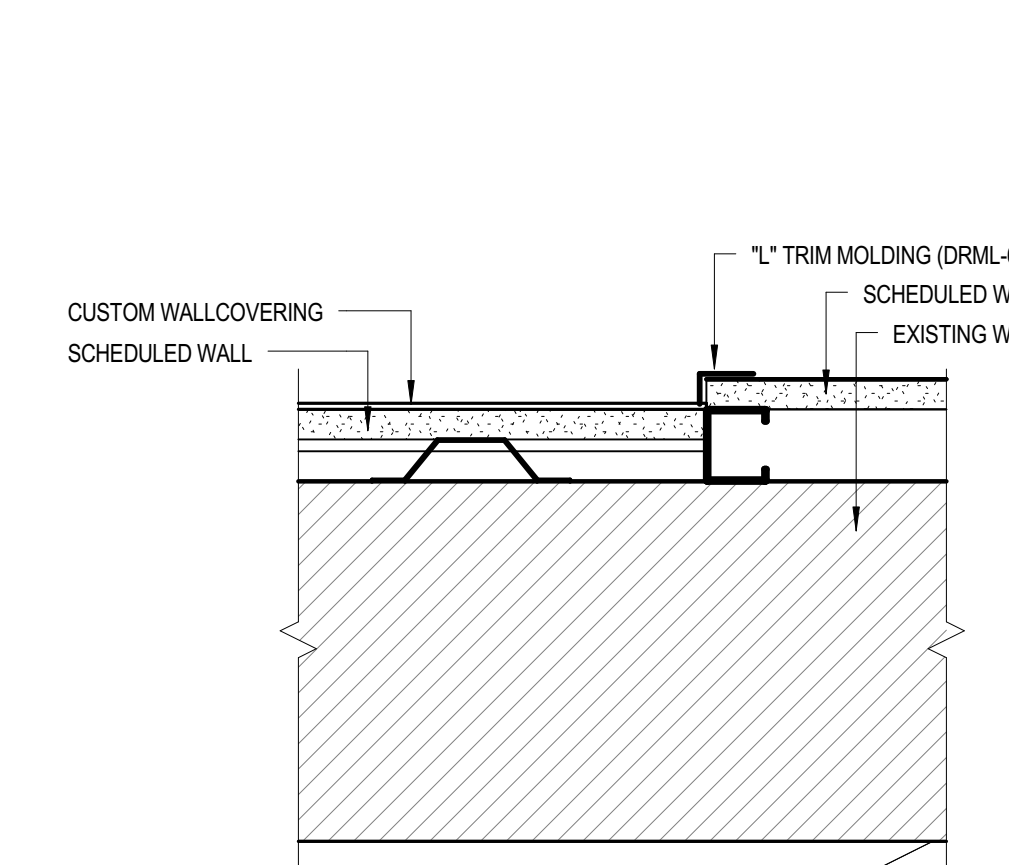
**2** BIO-BASED TILE TO PORCELAIN TILE  
6" = 1'-0"



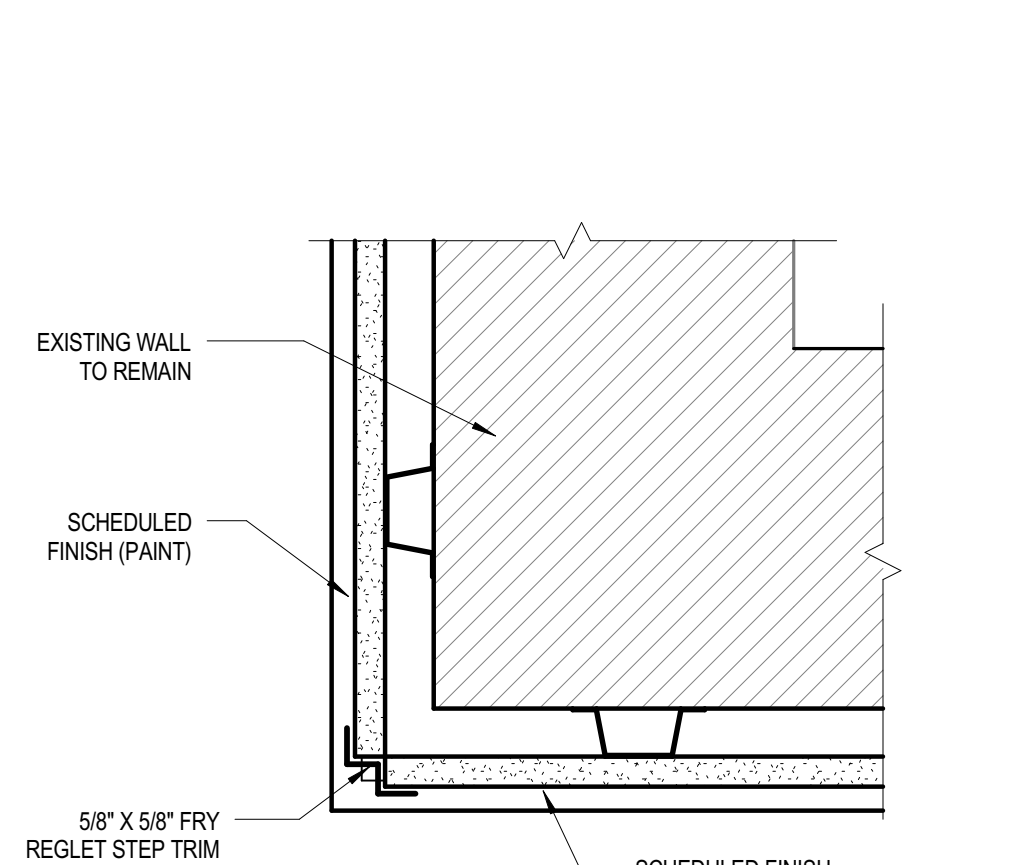
**5A** ALT. #7- CORNER DTL@ EXIST. BRICK  
3" = 1'-0"



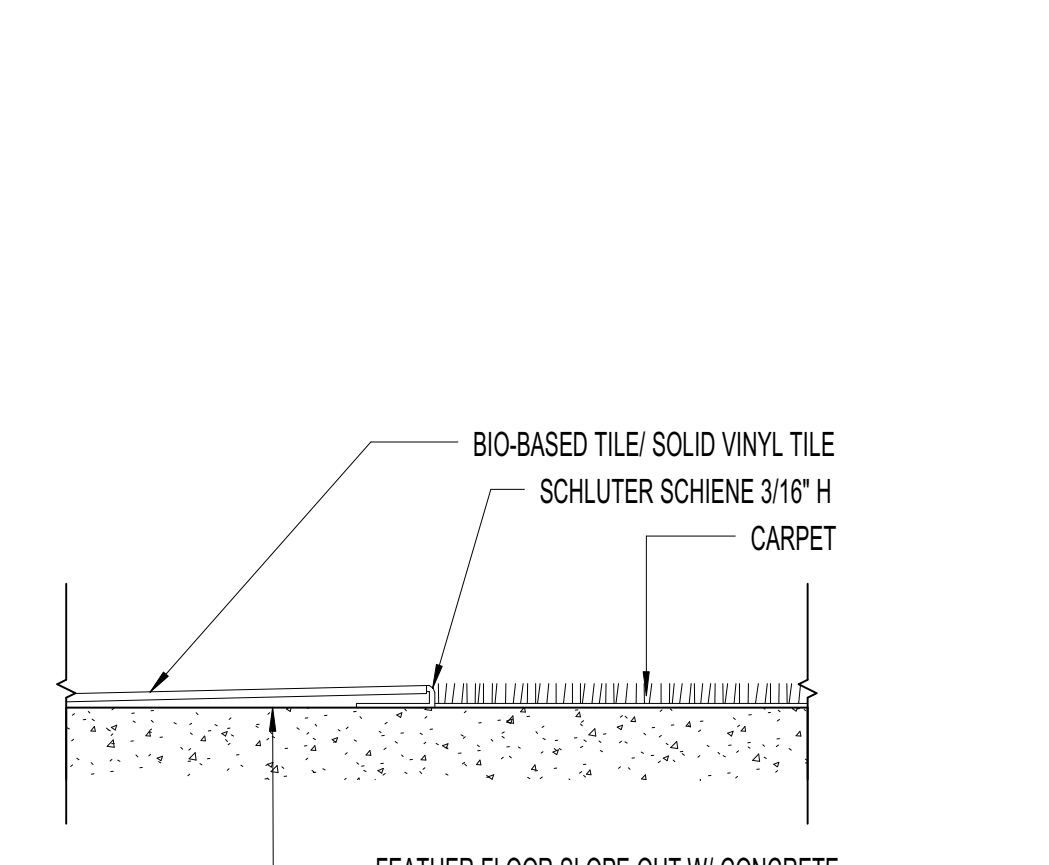
**6A** ALT. #7- WALL BASE CORNER DTL  
3" = 1'-0"



**4A** ALT. #7- WALLCOVERING TRANSITION DETAIL  
3" = 1'-0"



**3A** ALT. #7-WALLCOVERING@ CORNER DTL  
3" = 1'-0"



**1** BIO-BASED TILE TO CARPET  
6" = 1'-0"

NO	ISSUE	DATE
<b>Sheet Information</b>		
Date	AUGUST 25, 2016	
Job Number	146054.000	
Drawn	NE	
Checked	TW	
Approved	RGV	
<b>Title</b>		
<b>INTERIOR FINISH LEGEND AND SCHEDULE</b>		
<b>Sheet</b>		
<b>A-801</b>		