

**DALLAS PARK
AND
RECREATION
DEPARTMENT
ADMINISTRATIVE
OFFICES**

10031 E. NORTHWEST HWY
DALLAS, TX 75238

LANDSCAPE

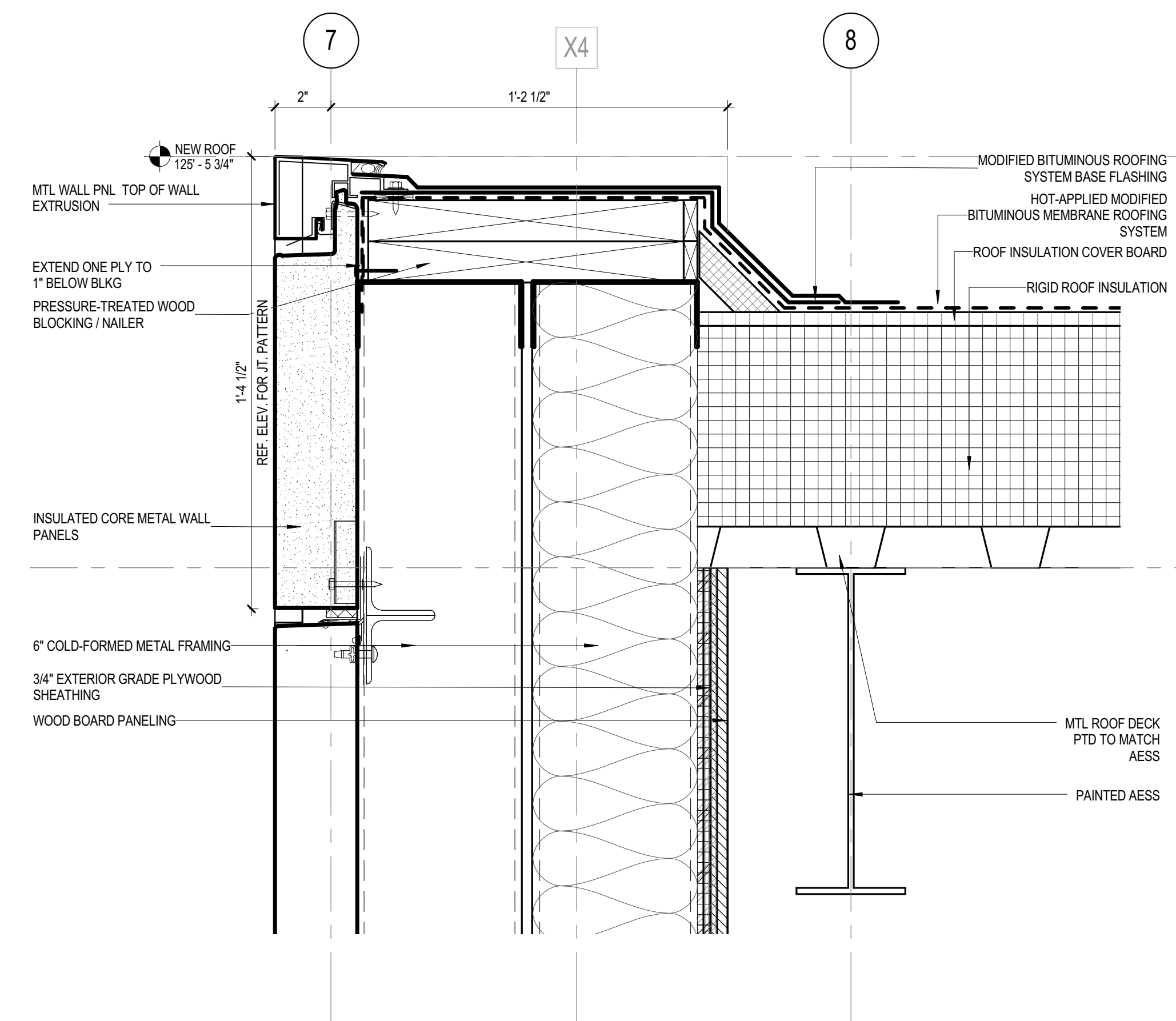
KEVIN SLOAN STUDIO
2400 EMPIRE CENTRAL, SUITE F
DALLAS, TX 75226
MATT STUBBS
(214) 459-1784

STRUCTURAL

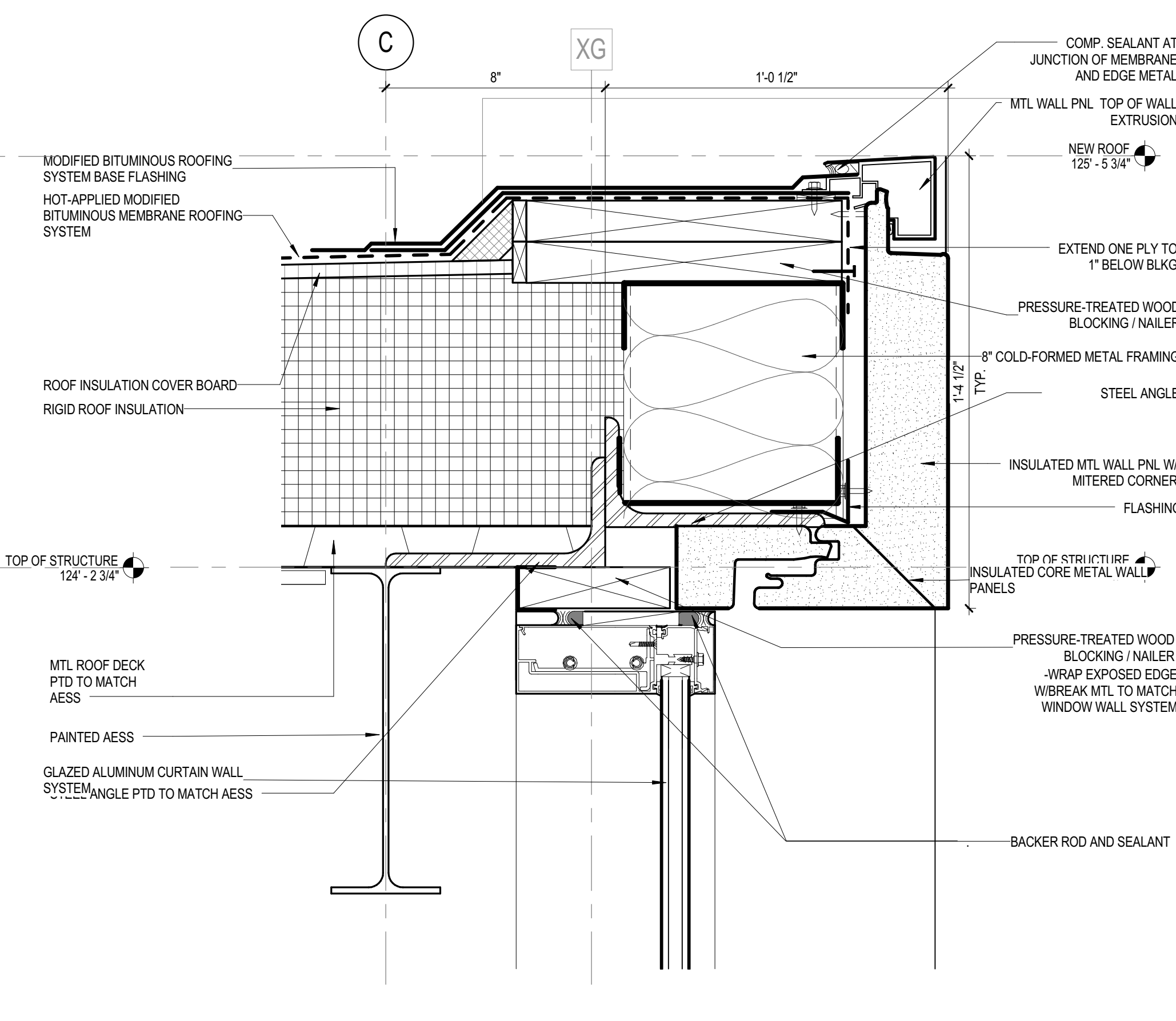
PLG ENGINEERING
5445 La Sierra SUITE 300
DALLAS, TX 75231
ANDY AAYERS
214.739.8100

MEP

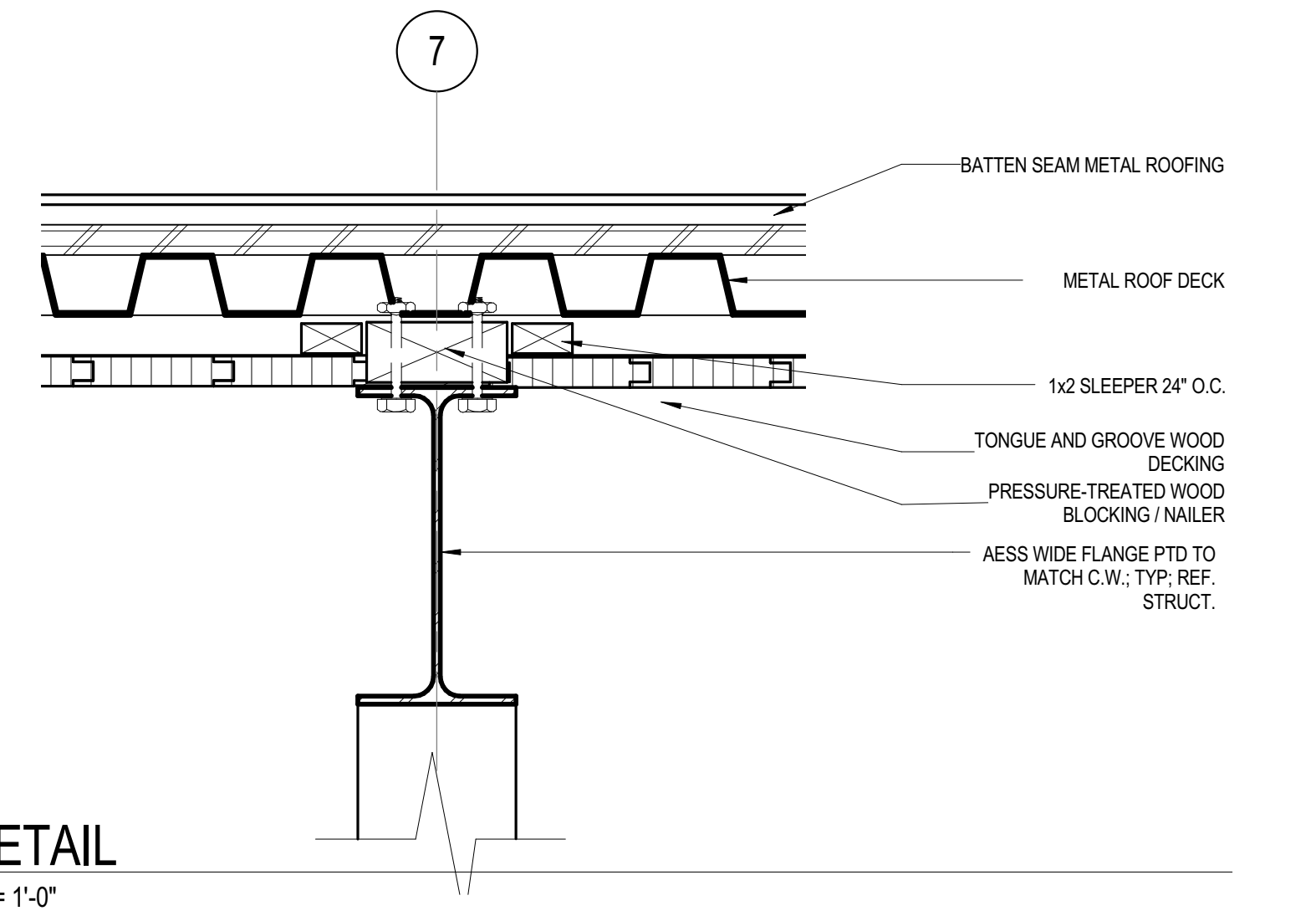
SW ASSOCIATES
5425 LBJ FVY
SUITE 300 - LB 129
DALLAS, TX 75240
CARL HEWETT
214.397.0211



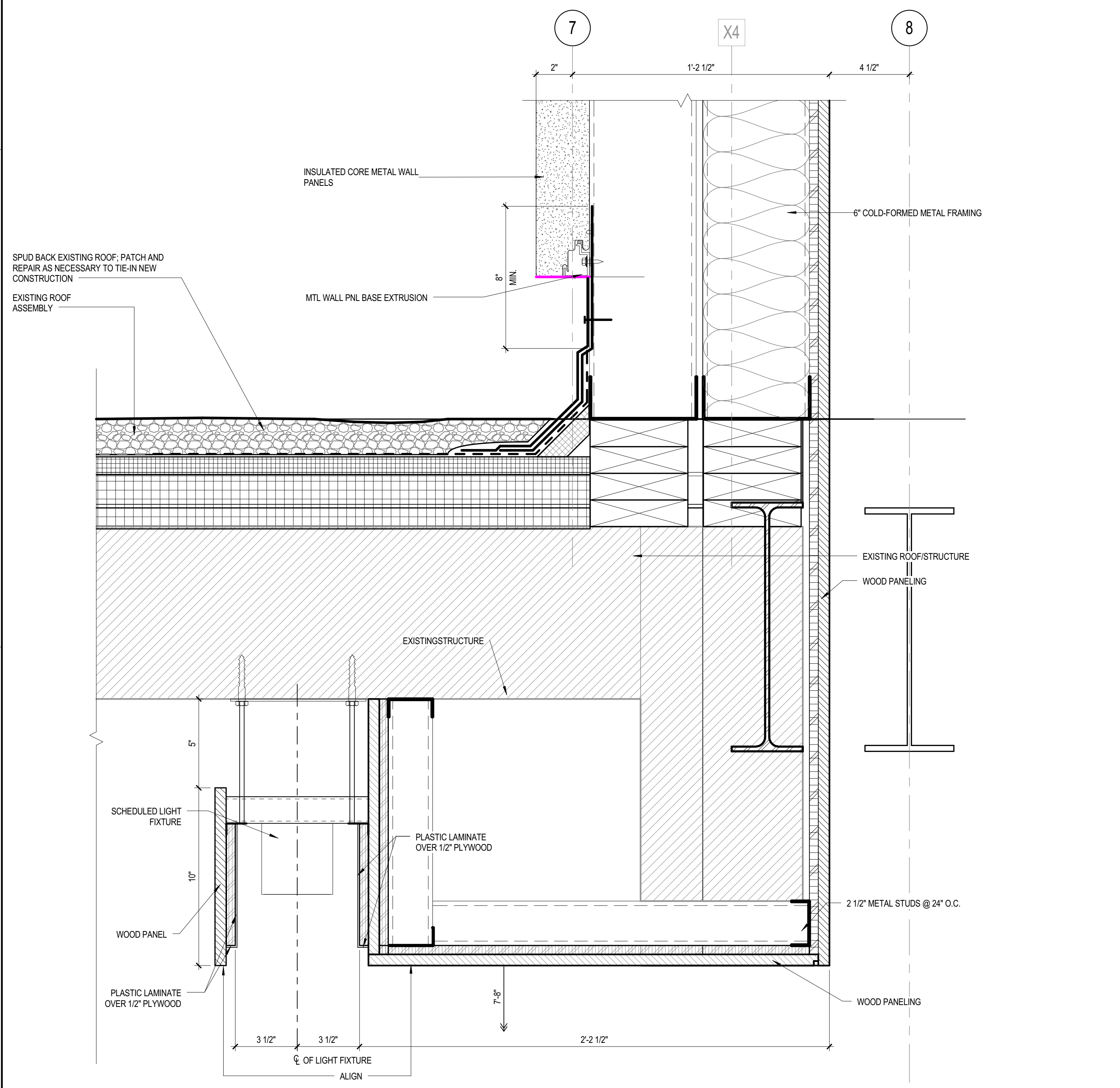
6 DETAIL
3" = 1'-0"



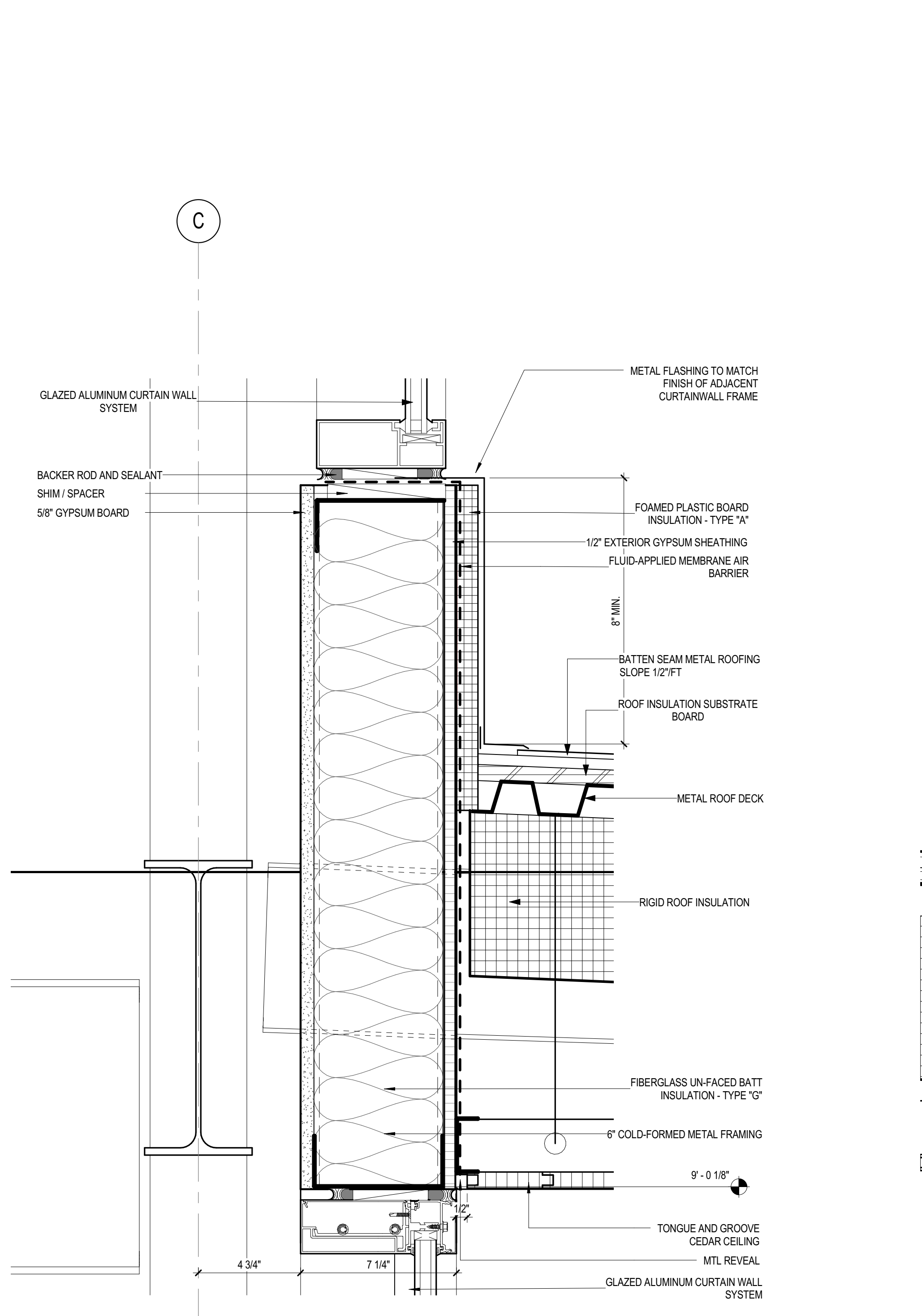
4 DETAIL
3" = 1'-0"



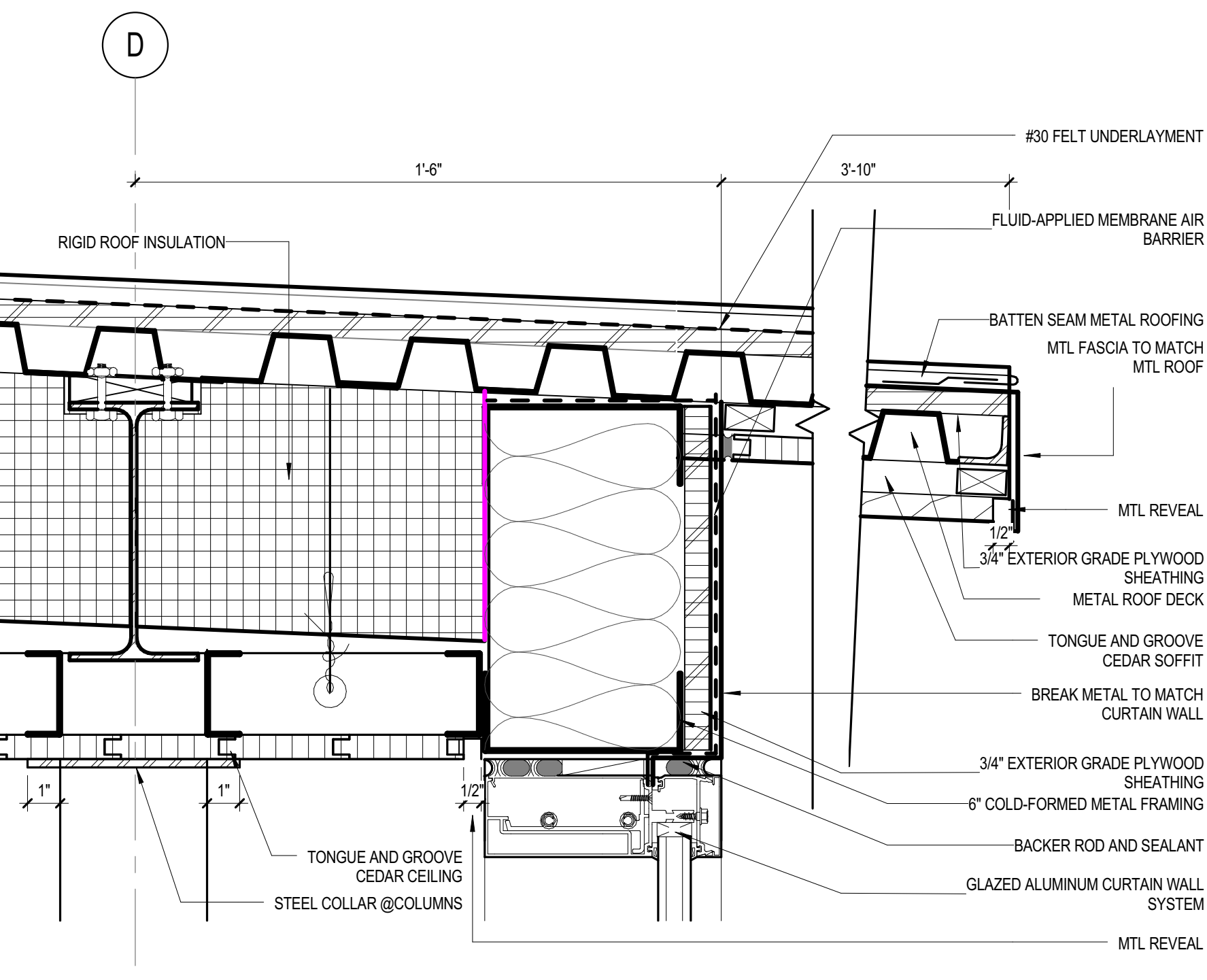
2 DETAIL
3" = 1'-0"



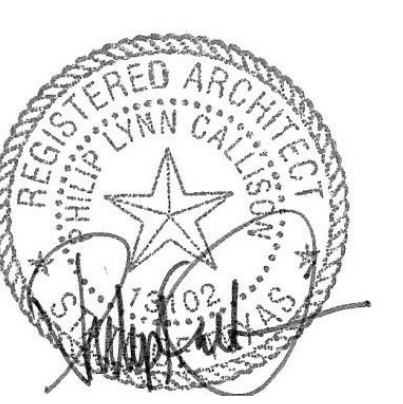
5 DETAIL
3" = 1'-0"



3 DETAIL
3" = 1'-0"



1 DETAIL
3" = 1'-0"



08/25/16

Revisions

NO	ISSUE	DATE
Sheet Information		
Date	AUGUST 25, 2016	
Job Number	146054.000	
Drawn	Author	
Checked	Checker	
Approved	Approver	
Title		
EXTERIOR ENVELOPE DETAILS		
Sheet		
A-424		

8/25/2016 9:25:00 AM \\perkinswill\proj\dallas\146054.000_LE_Muchent_SA\DESIGN\MEMO\WYARCH_JEM_2.rvt