

**EXTERIOR ELEVATION  
GENERAL NOTES**

1. MATERIAL SYMBOLS ON ELEVATIONS ARE TO DISPLAY THE EXTENT OF THE MATERIAL ONLY. THEY ARE NOT TO SCALE.
2. PROVIDE BRICK EXPANSION PER THE AMERICAN BRICK INSTITUTES RECOMMENDATIONS IN ALL NEW BRICK LOCATIONS.
3. REMOVE SECURITY BARS EXISTING WINDOWS. TYP.
4. ALL EXISTING MASONRY TO BE RESTORED & CLEANED PER SPECIFICATION.

**EXTERIOR ELEVATION  
LEGEND**

- ◊ EXTERIOR GLAZED OPENING TYPE RE: A-84x SERIES

**PERKINS  
+ WILL**

10100 North Central Expressway  
Suite 200  
Dallas, Texas 75231  
214.263.9700  
214.263.8701  
www.perkinswill.com

**DALLAS PARK  
AND  
RECREATION  
DEPARTMENT  
ADMINISTRATIVE  
OFFICES**

10031 E. NORTHWEST HWY  
DALLAS, TX 75238

LANDSCAPE

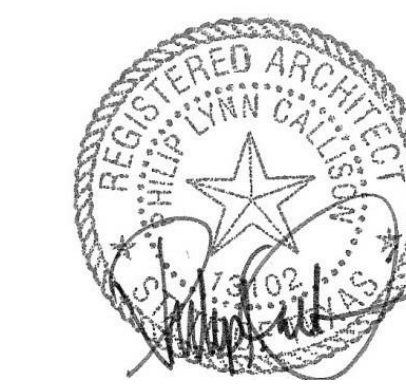
KEVIN SLOAN STUDIO  
2400 EMPIRE CENTRAL, SUITE F  
DALLAS, TX 75226  
MATT STUBBS  
(214) 459-1784

STRUCTURAL

PLG ENGINEERING  
5445 La Sierra SUITE 300  
DALLAS, TX 75231  
ANDY AAYERS  
214.739.8100

MEP

SW ASSOCIATES  
5425 LBJ FWY  
SUITE 300 - LB129  
DALLAS, TX 75240  
CARL HEWETT  
214.397.0211



08/25/16

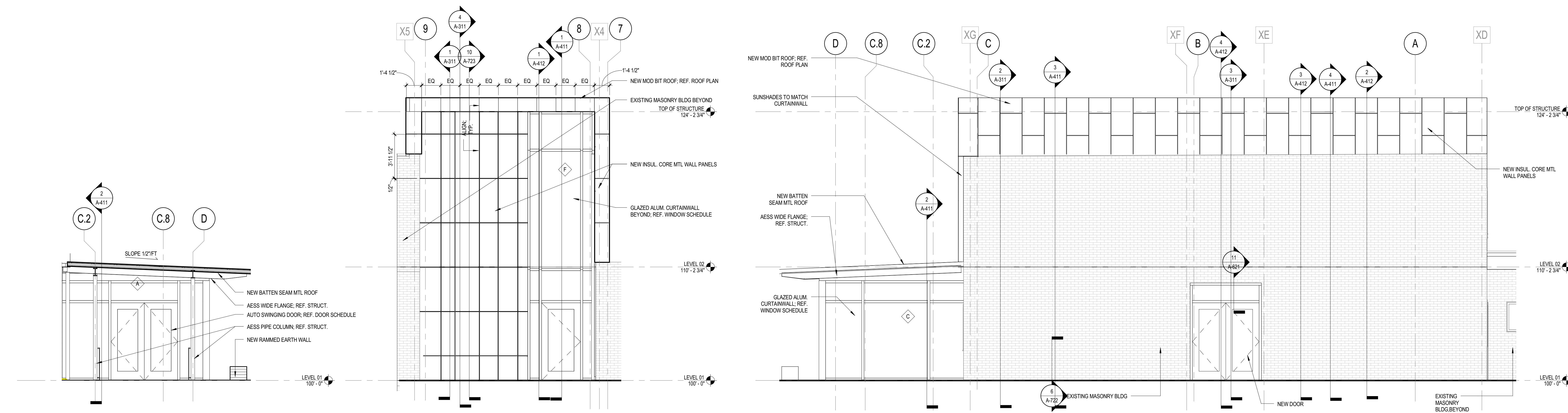
**Revisions**

NO	ISSUE	DATE
<b>Sheet Information</b>		
Date	AUGUST 25, 2016	
Job Number	146054.000	
Drawn	VBW	
Checked	RC	
Approved	PLC	

**Title**  
**ENLARGED  
EXTERIOR  
ELEVATIONS**

Sheet  
**A-302**

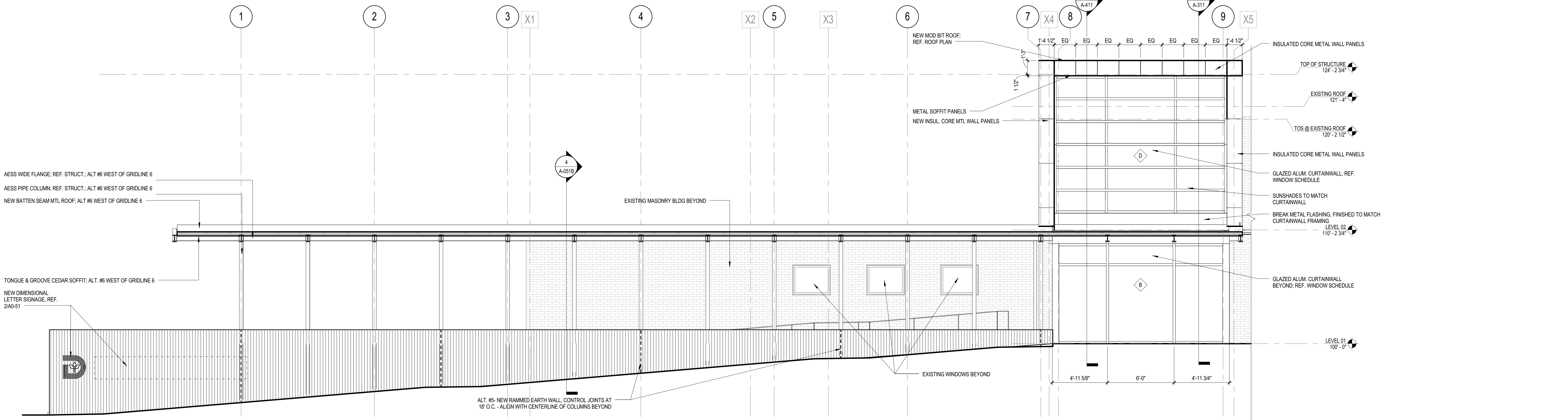
Copyright © 2013 Perkins+Will



**4 ENTRY VESTIBULE - WEST**  
1/4" = 1'-0"

**3 ENTRY VESTIBULE - NORTH**  
1/4" = 1'-0"

**2 ENTRY VESTIBULE - EAST**  
1/4" = 1'-0"



**1 ENTRY VESTIBULE - SOUTH**  
1/4" = 1'-0"

8/25/2016 9:24:27 AM \\perkinswill.net\Projects\Dallas\146054.000\_LE\_Muchent\_SA\DESIGN\REVIEWS\MARCH\_JEM\_2.rvt