

Revisions

RCP PLAN GENERAL NOTES

- THE CONTRACTOR SHALL COMPARE THIS REFLECTED CEILING PLAN WITH ELECTRICAL LIGHTING PLANS, MECHANICAL SUPPLY, RETURN, AND EXHAUST PLANS. THE CONTRACTOR SHALL REPORT ANY OMISSIONS OR INCONSISTENCIES TO THE ARCHITECT.
- SEE ELECTRICAL DRAWINGS FOR THE LOCATIONS OF CEILING MOUNTED SMOKE DETECTORS, SPEAKERS, EXIT SIGNAGE, FIRE ALARM DEVICES, WALL MOUNTED EXIT LIGHTS, ETC.
- FOR FURTHER DIMENSIONS SEE LARGE SCALE PLANS, SECTIONS, ELEVATIONS, AND DETAILS.
- COORDINATE GYPSUM BOARD FLURR DOWN HEIGHTS WITH FULL HEIGHT CABINETS AND INTERIOR ELEVATIONS (A-SIX SERIES).
- THE CONTRACTOR SHALL VERIFY THAT ACCESS PANELS OF TYPE SPECIFIED ARE INSTALLED IN NON-ACCESSIBLE TYPE CEILINGS WHERE SERVICE OR ADJUSTMENT TO MECHANICAL, PLUMBING, OR ELECTRICAL ITEMS MAY BE REQUIRED. ACCESS PANELS SHALL BE THE FIRE-RATED TYPE EQUAL TO THE RATING OF THE CEILING IN WHICH THEY OCCUR.
- RELOCATE SUPPLY DRAIN AND VENT PIPES TO MAINTAIN SCHEDULED CEILING HEIGHTS. COORDINATE RELOCATIONS WITH MEP ENGINEERS.
- CONTRACTOR SHALL INSTALL CONTROL JOINTS IN ALL GYP. BD. CEILINGS TO COMPLY WITH THE GYPSUM ASSOCIATION. FINAL LOCATIONS TO BE COORDINATED WITH ARCHITECT PRIOR TO INSTALLATION.

RCP LEGEND

- SUSPENDED 2' X 2' ACOUSTICAL CEILING SYSTEM
- SUSPENDED 2' X 4' ACOUSTICAL CEILING SYSTEM
- NEW 2' X 4' SURFACE MOUNTED FLUORESCENT LIGHT FIXTURE
- NEW WALL MOUNT LINEAR SCONCE BELOW, RE-ELEVATIONS FOR EXACT LOCATIONS (LENGTH OF FIXTURE VARIES)
- NEW CEILING SURFACE MOUNT LIGHT FIXTURE (LENGTH OF FIXTURE VARIES)
- NEW CEILING SURFACE MOUNT WALL WASH LIGHT FIXTURE
- NEW 1' X 4' SURFACE MOUNTED LIGHT FIXTURE
- SUPPLY AIR GRILLE REFER TO MECHANICAL DRAWINGS FOR ADDITIONAL INFORMATION
- RETURN AIR GRILLE REFER TO MECHANICAL DRAWINGS FOR ADDITIONAL INFORMATION
- EXHAUST AIR GRILLE REFER TO MECHANICAL DRAWINGS FOR ADDITIONAL INFORMATION
- SUPPLY STRIP DIFFUSER RE-MECHANICAL
- C.J. CONTROL JOINT
- NEW CEILING MOUNT PENDANT FIXTURE
- NEW 9' CEILING MOUNT PENDANT FIXTURE
- NEW 10' CEILING MOUNT PENDANT FIXTURE
- NEW LINEAR WALL SCONCE MOUNTED VERTICALLY
- COLUMN MOUNTED UPLIGHT, REF. DETAIL SA-051
- CEILING DETAIL / SECTION TAG
- CEILING HEIGHT DESIGNATION PER AREA
- UNDER COUNTER TASK LIGHTING
- ES EXPOSED STRUCTURE
- ETR EXISTING TO REMAIN AS IS
- WALL MOUNTED SECURITY CAMERA, COORDINATE WITH OWNER
- FLURR DOWN ABOVE UPPER CABINETS, REF. TYPICAL ARCHITECTURAL WOODWORK SECTIONS
- WOOD PANEL CEILING
- CONTINUOUS TRACK LIGHT FIXTURE
- GYPSUM CEILING
- METAL DECK

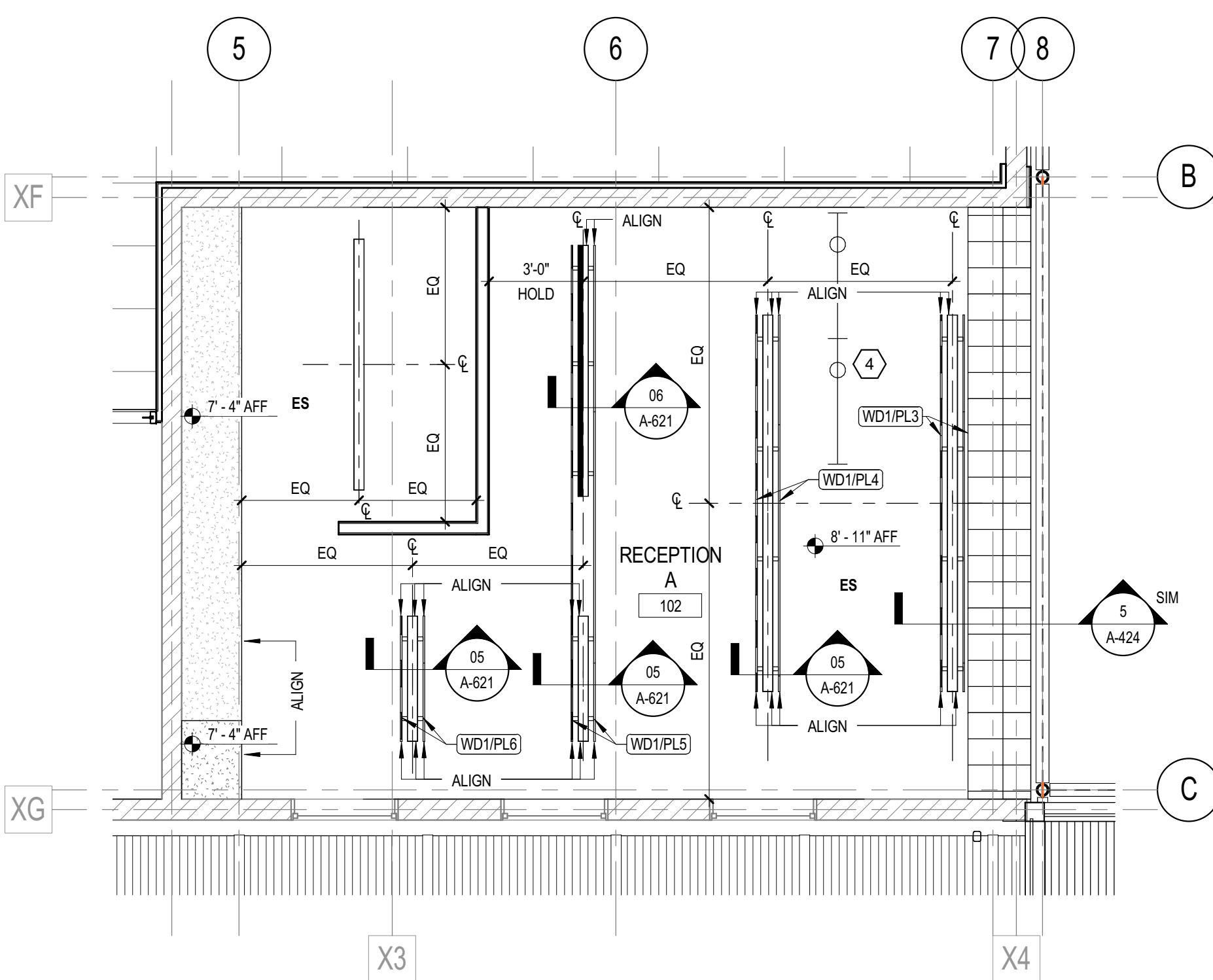
RCP NOTES BY NUMBER

- TONGUE AND GROOVE CEDAR SOFFIT / CEILING, ALT. #6 WEST OF GRID 6
- LIGHT FIXTURE MOUNTED TO EACH PURLIN, ALT. #6 WEST OF GRID 6
- TYPICAL WALL MOUNTED LIGHT FIXTURE IN CORRIDORS. REFERENCE ELEVATIONS FOR EXACT LOCATIONS AND MEP FOR LIGHT FIXTURE TYPE
- LED STRIP UNDER COUNTER LIGHTING AT RECEPTION DESK. REF. 01 / A-541
- EXISTING CEILING AND LIGHT FIXTURES TO REMAIN IN THIS ROOM ONLY
- MOUNT LIGHT FIXTURE AT 7'-4" AFF. TO BOTTOM OF FIXTURE
- NOT USED
- PAINT EXISTING CEILING P1
- 4'-0" X 4'-0" X 4" VERTICAL WALL SCONCE MOUNTED ON WALL AT 4'-0" ON CENTER A.F.F.

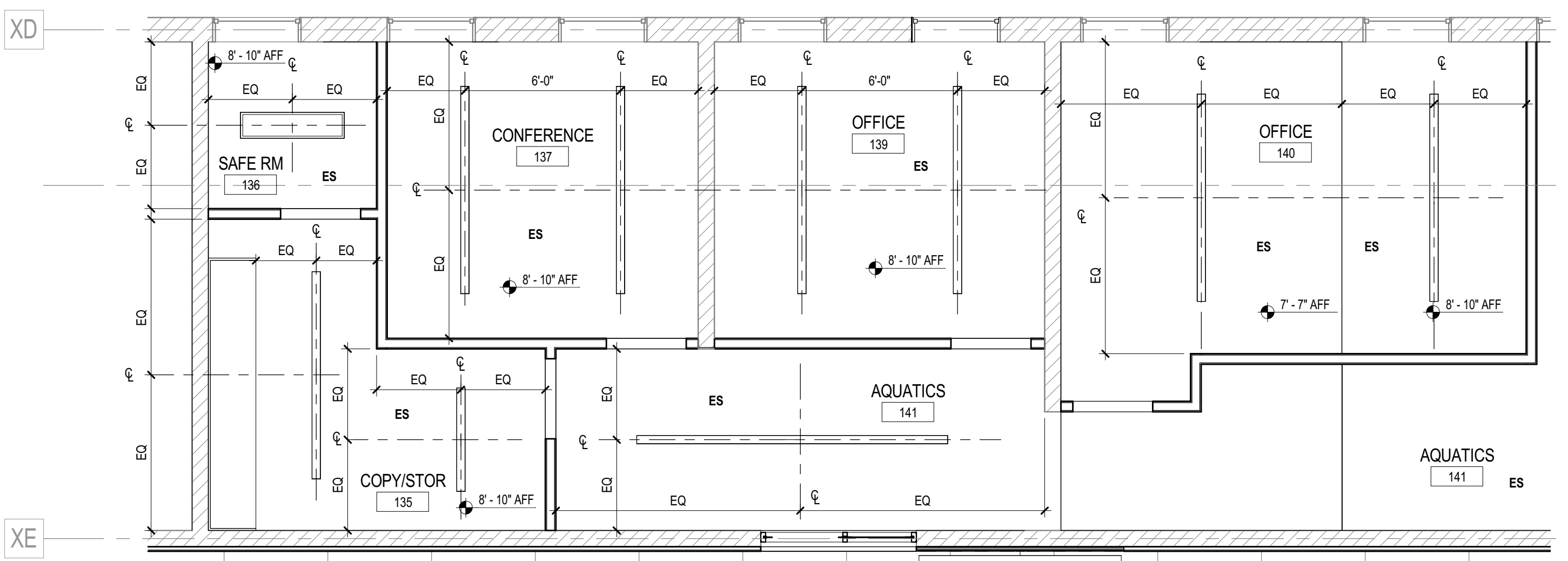
NO	ISSUE	DATE
Sheet Information		
Date	May 25, 2016	
Job Number	146054.000	
Drawn	NE	
Checked	TW	
Approved	RGV	

Title
**REFLECTED
CEILING PLAN
LEVEL 1**

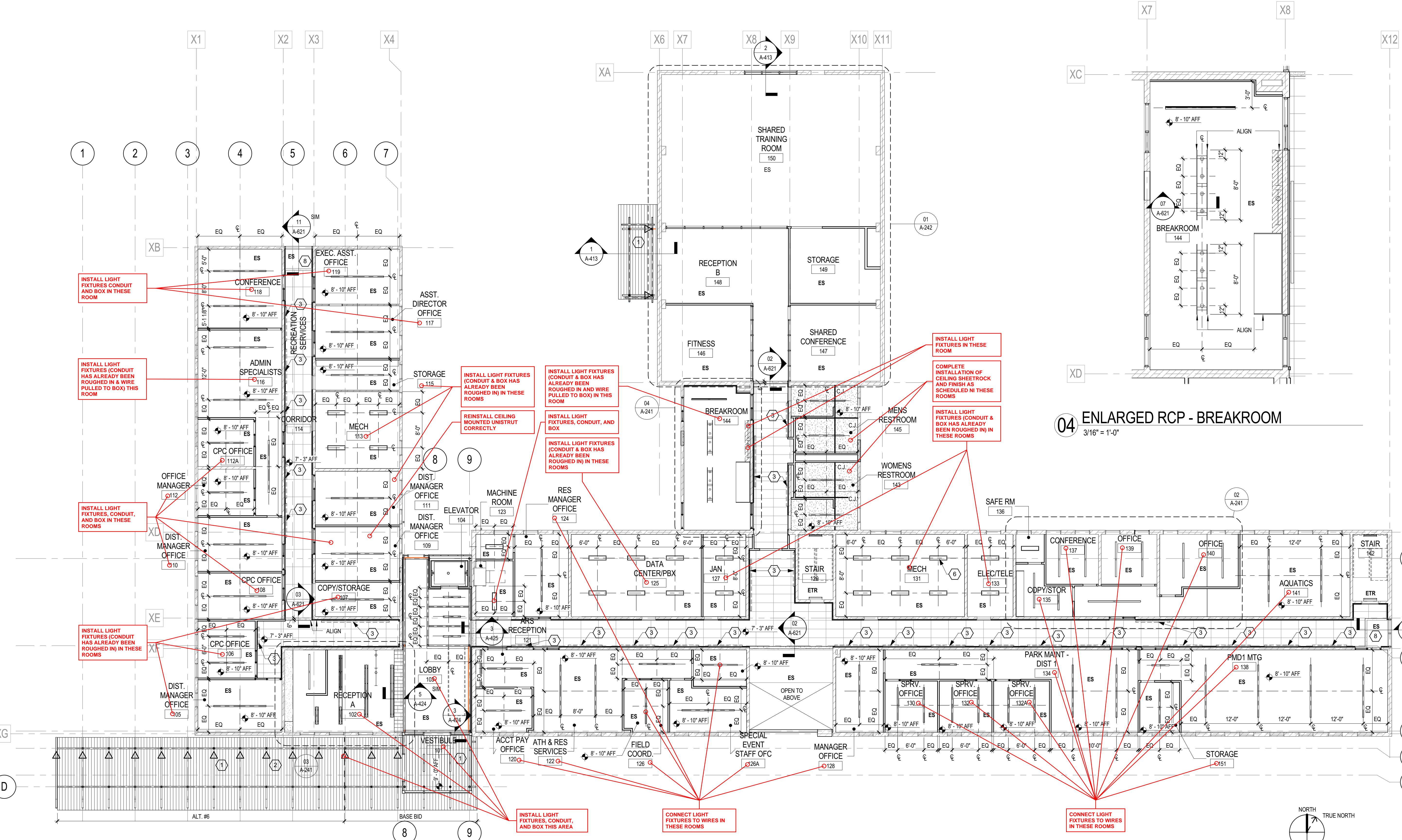
Sheet
A-241



03 ENLARGED RCP - RECEPTION A
1/4" = 1'-0"



02 ENLARGED RCP - AQUATICS AREA
1/4" = 1'-0"



01 REFLECTED CEILING PLAN LEVEL 1
3/32" = 1'-0"