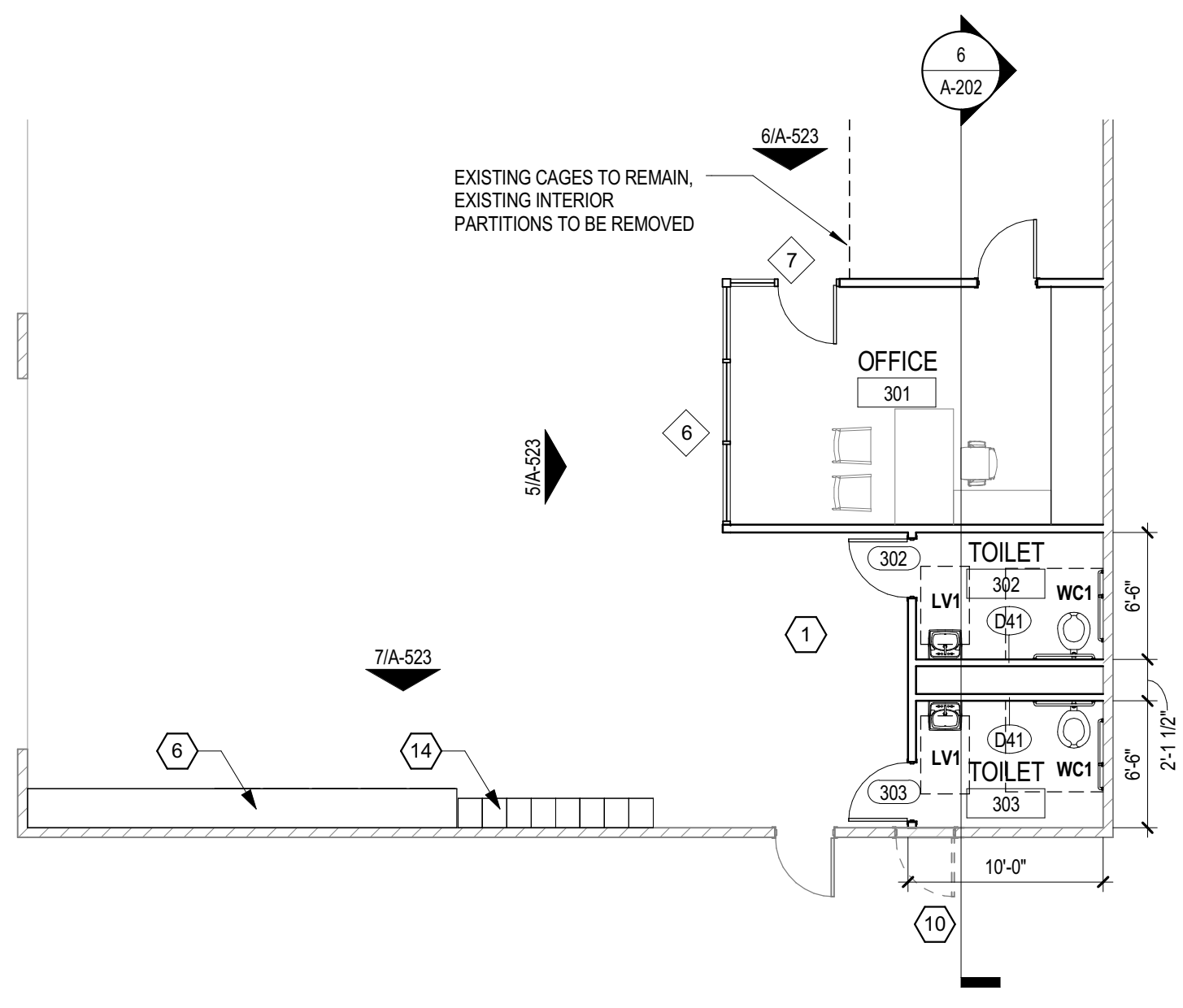


6 SECTION - PMD - ALTERNATE #2
1/2" = 1'-0"

NEW SCOPE OF WORK NOTES BY NUMBER

DO NOT INSTALL DOOR 301B; GYP. BD PARTITION SHOULD BE CONTINUOUS WITH NO OPENING.

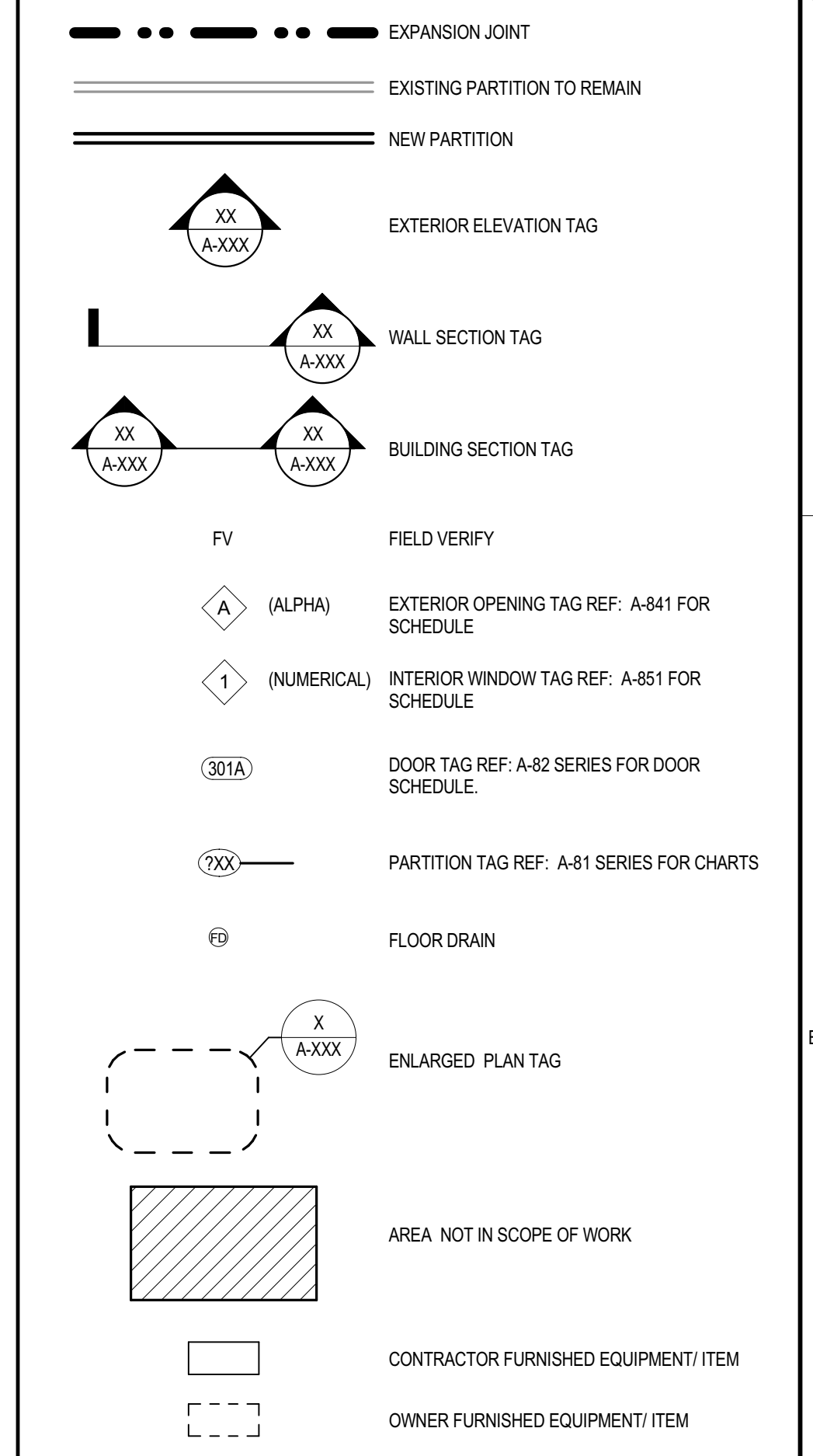


2 FLOOR PLAN - PMD1-ALTERNATE #2
1/8" = 1'-0"

FLOOR PLAN GENERAL NOTES

- PARTITION TYPES ARE SCHEDULED IN THE A-81 SERIES. RE: A-01 SERIES 'CODE COMPLIANCE PLANS' FOR GRAPHIC EXTENT OF FIRE RATED PARTITIONS. REFER TO PARTITION TYPE SCHEDULE FOR LOCATION OF SOUND ATTENUATION BLANKETS.
- REFER TO SHEET A-001 FOR ADDITIONAL GENERAL NOTES.
- ALL PARTITIONS ARE TYPE "A41" UNLESS OTHERWISE NOTED.
- DIMENSIONS SHOWN ON THE FLOOR PLANS FOR NEW CONSTRUCTION ARE TO THE FACE OF FINISH OF INTERIOR WALLS, TO FACE OF STRUCTURAL WALLS AND TO FACE OF CONCRETE OR MASONRY WALLS. UNLESS OTHERWISE INDICATED. DIMENSIONS IN RENOVATED AREAS ARE FROM FINISH FACE OF EXISTING WALLS TO FINISH FACE OF NEW STUD WALLS. UNLESS OTHERWISE INDICATED.
- WHERE NEW GYPSUM BOARD PARTITIONS ARE A CONTINUATION OF AN EXISTING PARTITION OR COLUMN ENCASEMENT, THE FACE OF THE NEW GYPSUM BOARD SHALL BE ALIGNED WITH THE FACE OF THE EXISTING SURFACE. WHERE A ONE-HOUR PARTITION IS SHOWN AS A CONTINUATION OF A TWO-HOUR PARTITION OR COLUMN ENCASEMENT, THE FACE OF THE GYPSUM BOARD SHALL BE ALIGNED. STUDS SHALL BE OFFSET AND ADDITIONAL LAYERS OF GYPSUM BOARD SHALL BE PROVIDED AS REQUIRED TO PROVIDE FACE ALIGNMENT OF GYPSUM BOARD.
- ALL DIMENSIONS SHOWN AT EXISTING WALLS ARE FOR REFERENCE ONLY AND SHOULD BE FIELD VERIFIED.
- NOT USED
- SEE A-500, ARCHITECTURAL ENLARGED PLANS FOR TYPICAL MOUNTING HEIGHTS OF PLUMBING FIXTURES AND TOILET ACCESSORIES.
- LAVATORIES AND SINKS SHALL BE ACCOMPANIED BY A PAPER TOWEL DISPENSER "TAP" AND SOAP DISPENSER "TAP" UNLESS OTHERWISE NOTED ON THE FLOOR PLANS.
- SEE A-511 FOR ENLARGED PLAN AT A TYPICAL DRINKING FOUNTAIN ALLOWANCE.
- REFER TO A-55 SERIES FOR MISCELLANEOUS DETAILS.
- PROVIDE MINIMUM 1'-0" CLEAR FLOOR SPACE AT THE PUSH SIDE OF EVERY DOOR WITH A CLOSER. PROVIDE MINIMUM 1'-6" CLEAR AT THE PULL SIDE OF EVERY DOOR. UNLESS SPECIFICALLY DIMENSIONED, NOTED OR SHOWN OTHERWISE.
- PROVIDE A 1'-4" WIDE CHASE BEHIND SINGLE SIDED TOILETS, AND A 1'-6" WIDE CHASE BETWEEN BACK TO BACK TOILETS. FOR WALL HUNG FIXTURES, FOR FLOOR MOUNTED FIXTURES PROVIDE A 6" STUD. MINIMUM.
- ALL LAVATORIES AND SINKS SHALL BE MOUNTED A MINIMUM OF 1'-3" FROM THE CENTERLINE OF THE FIXTURE TO THE FINISHED FACE OF THE ADJACENT PARTITION.
- ALL PARTITIONS INDICATED AS NEW PARTITIONS WITHIN EXISTING WALLS SHALL BE SAME TYPE & ASSEMBLY AS EXISTING WALL. ALL MASONRY SHALL MATCH EXISTING.
- ALL DOOR OPENINGS IN LOAD BEARING WALLS ARE INTENDED TO REMAIN IN EXISTING LOCATION, UNO.

FLOOR PLAN LEGEND



FLOOR PLAN KEYNOTES

- ALL GYP. BD. TO BE MOISTURE RESISTANT; TYP.
- ALT. #6- EXT. CANOPY; REF. ROOF PLAN & RCP
- ALL CORRIDOR WALLS ARE 5/8" G.B. ON 7/8" MTL FURRING ON EXISTING CMU PARTITION, U.N.O.
- WIRE MESH PARTITIONS TO DECK (APPROX. 10'-0", F.V.)
- LINE OF WALL ABOVE
- EXISTING METAL UNIFORM LOCKERS TO BE RELOCATED (OFC).
- ELECTRICAL PANEL
- EXISTING LOUVERS TO REMAIN; CLOSE OFF PER DETAIL X
- NEW HANDRAIL/ GUARDRAIL
- DEMO EXISTING DOOR AND INFILL WITH MASONRY TO MATCH ADJACENT MASONRY
- VOIP CABINET; OFCI
- PUNCH BLOCK; OFCI
- SECURITY CABINET; OFCI
- NEW METAL LOCKERS; OFCI
- EXT. CANOPY; REF. ROOF PLANS AND RCP

PERKINS + WILL

10100 North Central Expressway
Suite 300
Dallas, Texas 75231
214.253.9700
214.263.6701
www.perkinswill.com

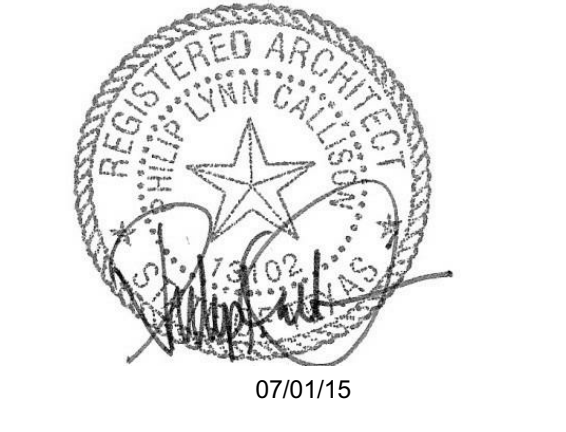
DALLAS PARK AND RECREATION DEPARTMENT ADMINISTRATIVE OFFICES

10031 E. NORTHWEST HWY
DALLAS, TX 75238

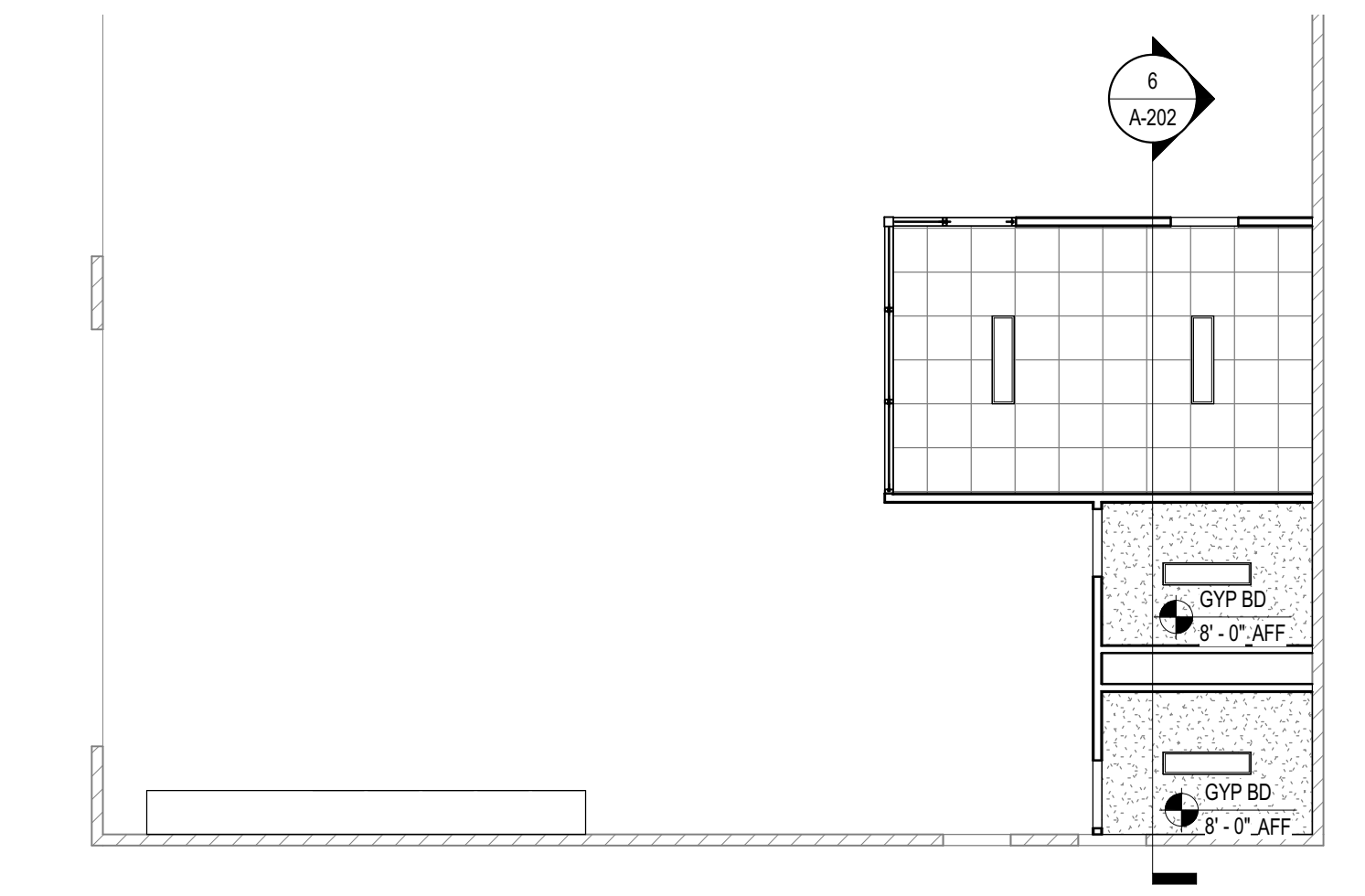
LANDSCAPE
KEVIN SLOAN STUDIO
2400 EMPIRE CENTRAL, SUITE F
DALLAS, TX 75226
MATT STUBBS
(214) 459-1784

STRUCTURAL
PLG ENGINEERING
5445 La Sierra SUITE 300
DALLAS, TX 75231
ANDY AAYERS
214.739.9100

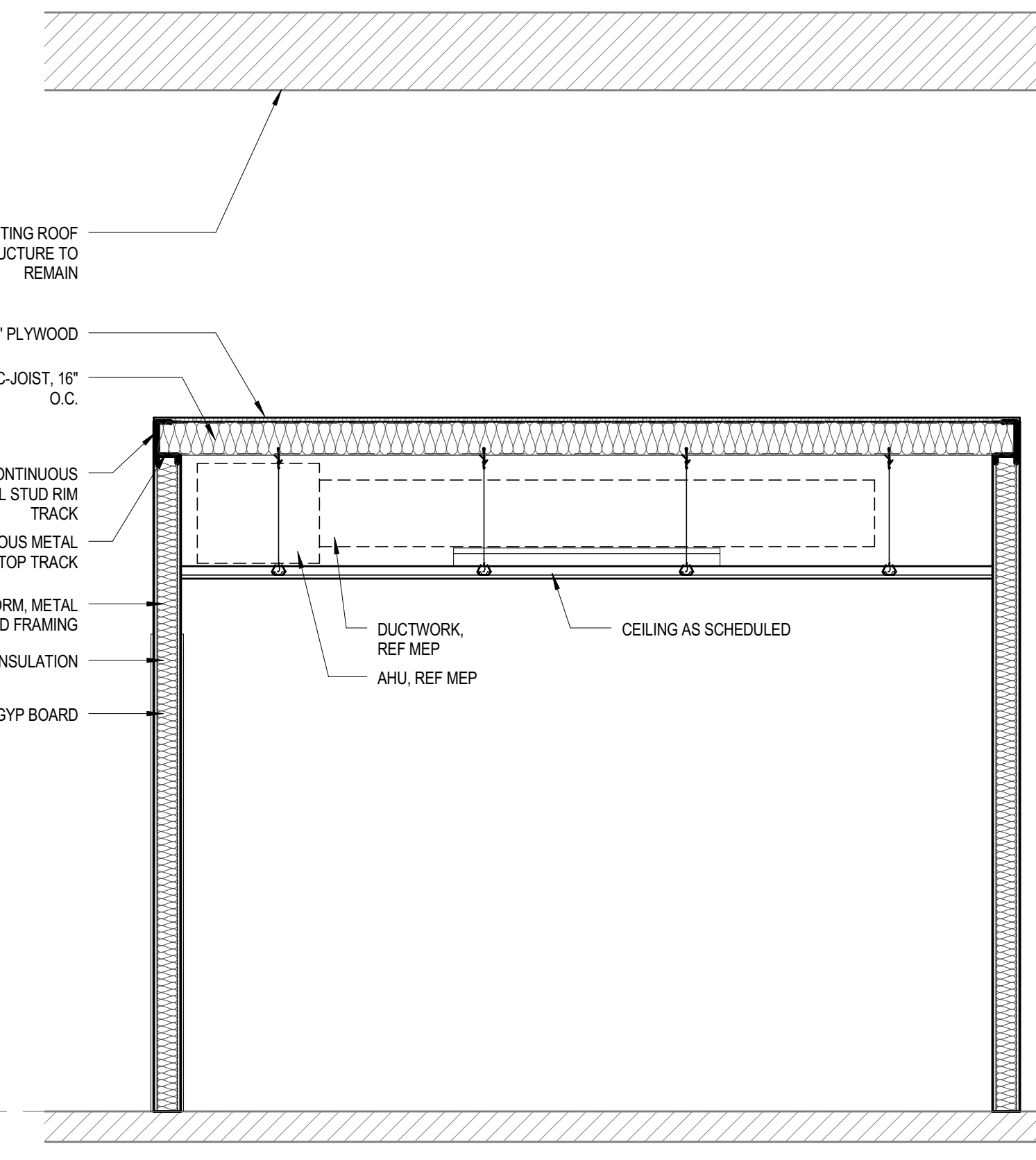
MEP
SW ASSOCIATES
5425 LBJ FVY
SUITE 300 - LB129
DALLAS, TX 75240
CARL HEWETT
214.397.0211



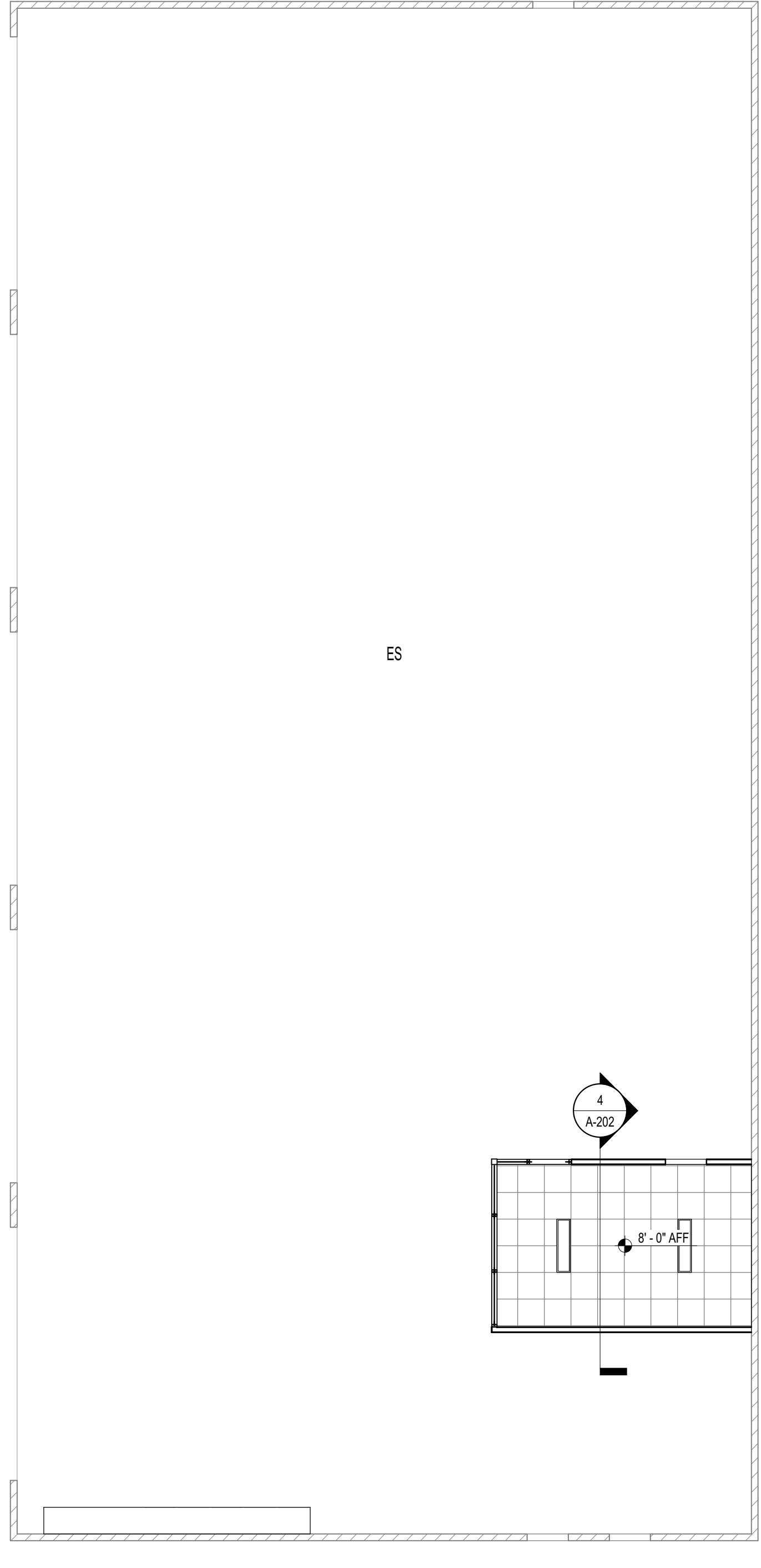
Revisions



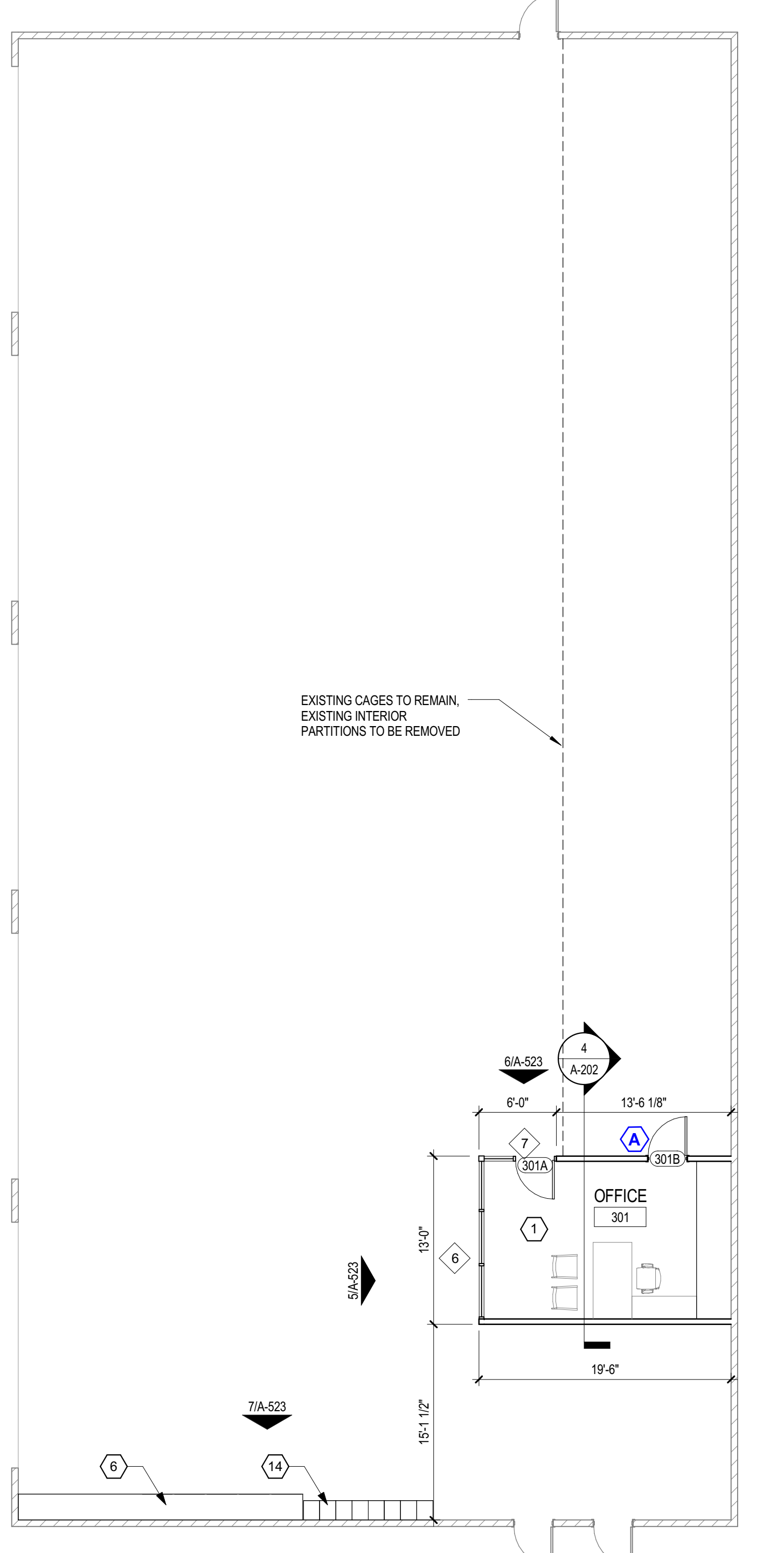
5 RCP - PMD - ALTERNATE #2
1/8" = 1'-0"



4 SECTION - PMD - BASE BID
1/2" = 1'-0"



3 RCP - PMD - BASE BID
1/8" = 1'-0"



1 FLOOR PLAN - PMD1 - BASE BID
1/8" = 1'-0"

