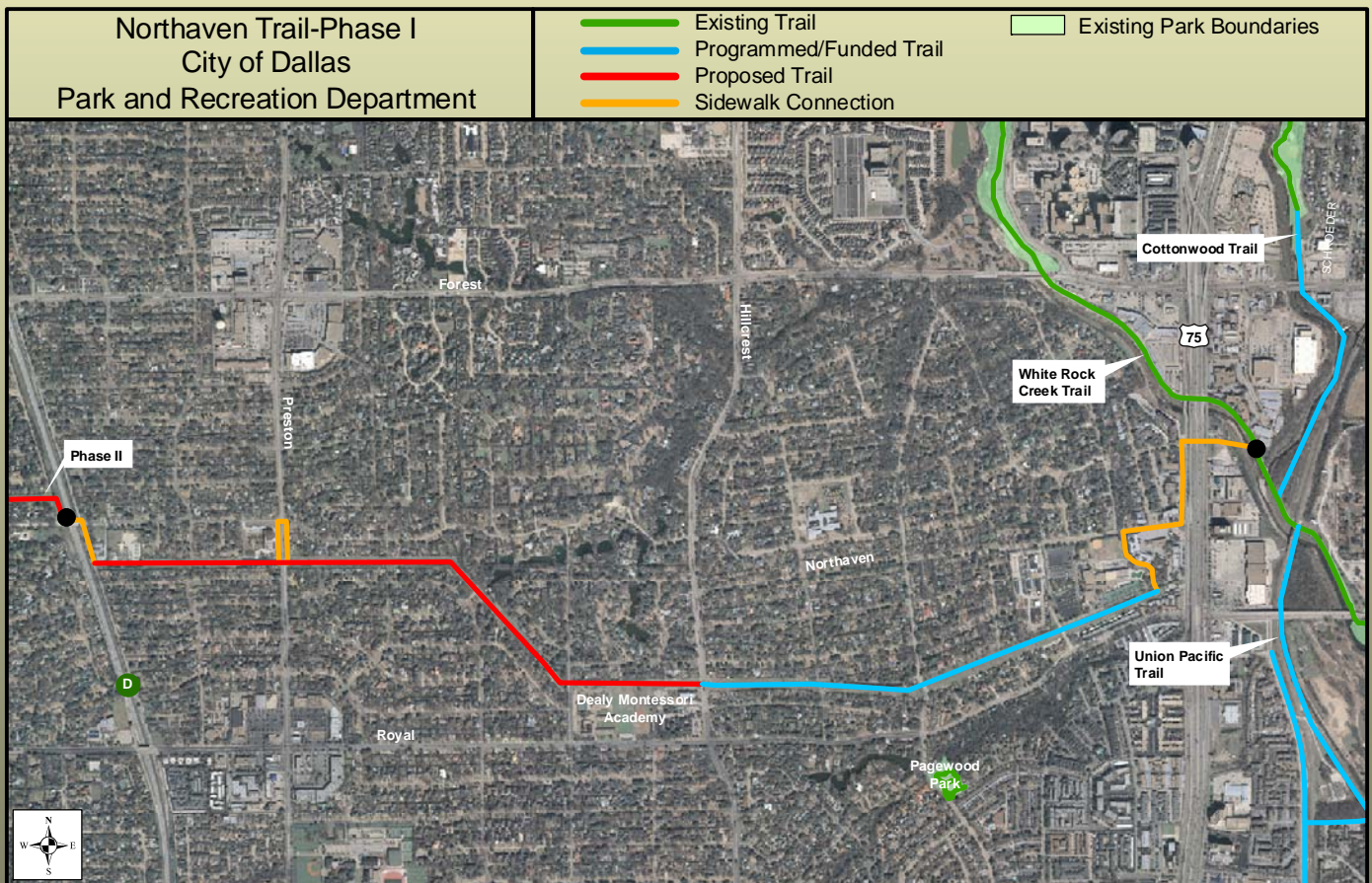


Northaven Trail

Located primarily in an ONCOR utility right-of-way the Northaven Trail will be the primary eastwest trail in north Dallas. The trail will link White Rock Creek Greenbelt, Royal Park and the Elm Fork Greenbelt. It will connect with the existing White Rock Creek Greenbelt Trail and the proposed Elm Fork Trail. The Northaven trail will also connect several public and private schools, churches, and a YMCA.

Total Planned Length:	49,845 Linear Feet (9.4 miles)
Total Current Length:	0 Linear Feet
Percent Complete:	0%
Surface:	Concrete
Width:	12 Feet
Right-of-Way Status:	A license agreement with ONCOR will be required.
Est. Unfunded Need:	\$10 Million



Northaven Trail

